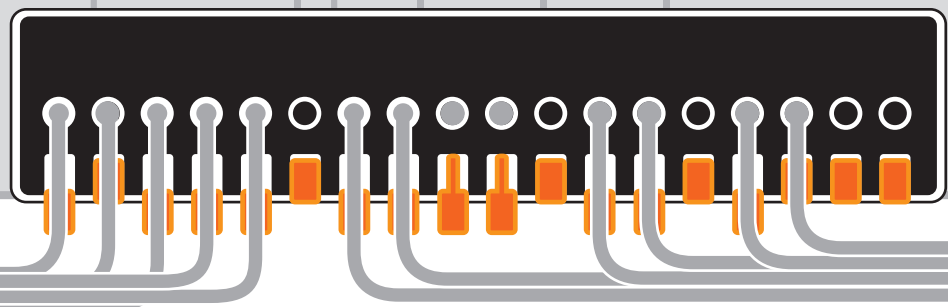


# Screwless

Mini type,  
simple type cage clamp  
terminal blocks

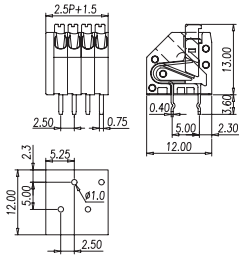


## Mini type, simple type cage clamp terminal blocks

141 series are screwless (spring) type PCB terminal blocks. Available with 2.54mm, 3.81mm, 3.96mm, 5.00mm, 7.50mm, 7.62mm pitches. Terminals and solid wires can be inserted into the block directly without the assistance of a lever, but smaller wires can be clamped in the block with the lever. 144 series also provides no lever design, which can reduce the height of housing for special application requirement. The wire can be removed easily by just pressing down the clamp with a screwdriver. Most of the screwless type terminal blocks are all assembled piece by piece. The block is designed in according with IEC60947-7-4, UL1059 standards. Most of the products are UL, VDE approved. The convenient wire connection method of the product is extremely suitable for the telecommunication system, lighting system, security system, and wiring of architectures.



**0136-10**

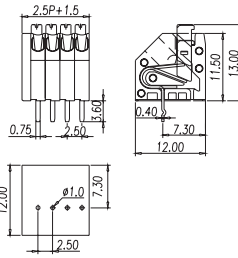


Pitch:2.50mm

Approval	UL IEC	
Technical Data	UL	IEC
Rated voltage	300V	450V
Rated current	2A	2A
Conductor cross-section, solid (AWG/mm <sup>2</sup> )	28-20	0.2-0.5
Conductor cross-section, flexible (AWG/mm <sup>2</sup> )		0.2-0.5
Rated impulse voltage		4KV
Torque(N-m)		
Screw		
Wire strip length	8mm	
Pole	Cat.No.	
02	0136-1002	
03	0136-1003	
:	:	
:	:	



**0136-11**

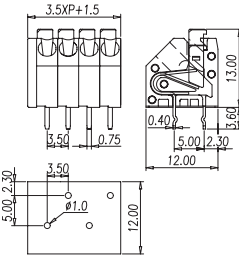


Pitch:2.50mm

Approval	UL IEC	
Technical Data	UL	IEC
Rated voltage	150V	130V
Rated current	2A	2A
Conductor cross-section, solid (AWG/mm <sup>2</sup> )	28-20	0.2-0.5
Conductor cross-section, flexible (AWG/mm <sup>2</sup> )		0.2-0.5
Rated impulse voltage		2.5KV
Torque(N-m)		
Screw		
Wire strip length	8mm	
Pole	Cat.No.	
02	0136-1102	
03	0136-1103	
:	:	
:	:	



**0136-20**

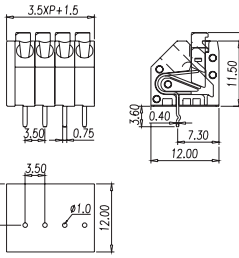


Pitch:3.50mm

Approval	UL IEC	
Technical Data	UL	IEC
Rated voltage	300V	450V
Rated current	6A	2A
Conductor cross-section, solid (AWG/mm <sup>2</sup> )	28-16	0.2-1
Conductor cross-section, flexible (AWG/mm <sup>2</sup> )		0.2-1
Rated impulse voltage		4KV
Torque(N-m)		
Screw		
Wire strip length	8mm	
Pole	Cat.No.	
02	0136-2002	
03	0136-2003	
:	:	
:	:	



**0136-21**

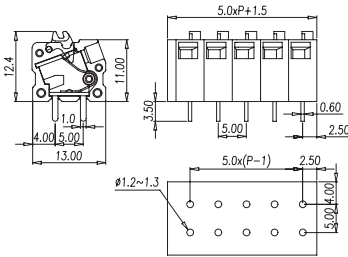


Pitch:3.50mm

Approval	UL IEC	
Technical Data	UL	IEC
Rated voltage	300V	130V
Rated current	6A	2A
Conductor cross-section, solid (AWG/mm <sup>2</sup> )	28-16	0.2-1
Conductor cross-section, flexible (AWG/mm <sup>2</sup> )		0.2-1
Rated impulse voltage		2.5KV
Torque(N-m)		
Screw		
Wire strip length	8mm	
Pole	Cat.No.	
02	0136-2102	
03	0136-2103	
:	:	
:	:	



**0137-10**

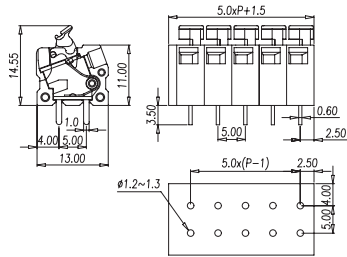


Pitch:5.00mm

Approval	UL IEC	
Technical Data	UL	IEC
Rated voltage	300V	250V
Rated current	10A	17.5A
Conductor cross-section, solid (AWG/mm <sup>2</sup> )	26-14	0.2-1.5
Conductor cross-section, flexible (AWG/mm <sup>2</sup> )	26-16	0.2-1.5
Rated impulse voltage		4KV
Torque(N-m)		
Screw		
Wire strip length	9mm	
Pole	Cat.No.	
02	0137-1002	
:	:	
:	:	
24	0137-1024	

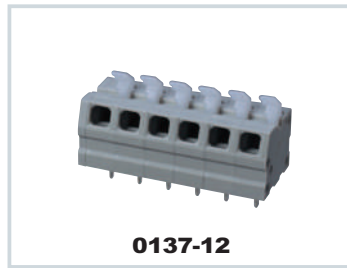


**0137-11**

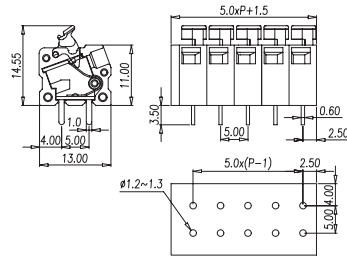


Pitch:5.00mm

Approval	UL IEC	
Technical Data	UL	IEC
Rated voltage	300V	250V
Rated current	10A	17.5A
Conductor cross-section, solid (AWG/mm <sup>2</sup> )	26-14	0.2-1.5
Conductor cross-section, flexible (AWG/mm <sup>2</sup> )	26-16	0.2-1.5
Rated impulse voltage		4KV
Torque(N-m)		
Screw		
Wire strip length	9mm	
Pole	Cat.No.	
02	0137-1102	
:	:	
:	:	
24	0137-1124	

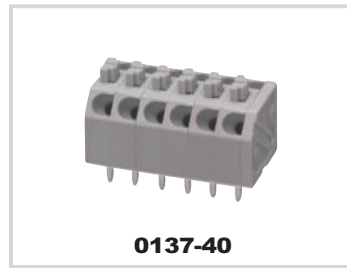


**0137-12**

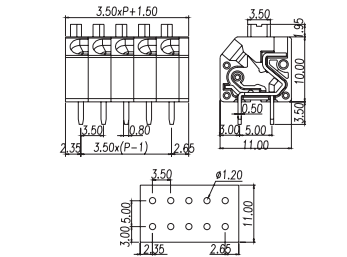


Pitch:5.00mm

Approval	UL IEC	
Technical Data	UL	IEC
Rated voltage	300V	250V
Rated current	10A	17.5A
Conductor cross-section, solid (AWG/mm <sup>2</sup> )	26-14	0.2-1.5
Conductor cross-section, flexible (AWG/mm <sup>2</sup> )	26-16	0.2-1.5
Rated impulse voltage		4KV
Torque(N-m)		
Screw		
Wire strip length	9mm	
Pole	Cat.No.	
02	0137-1202	
:	:	
:	:	
24	0137-1224	



**0137-40**



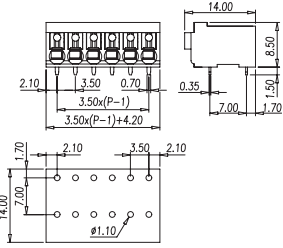
Pitch:3.50mm

Approval	UL IEC	
Technical Data	UL	IEC
Rated voltage	300V	130V
Rated current	10A	17.5A
Conductor cross-section, solid (AWG/mm <sup>2</sup> )	26-16	0.2-1.5
Conductor cross-section, flexible (AWG/mm <sup>2</sup> )	24-20	0.2-1.5
Rated impulse voltage		2.5KV
Torque(N-m)		
Screw		
Wire strip length	9mm	
Pole	Cat.No.	
02	0137-4002	
:	:	
:	:	
24	0137-4024	



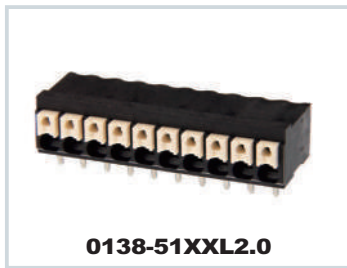


**0138-51XXL1.5**

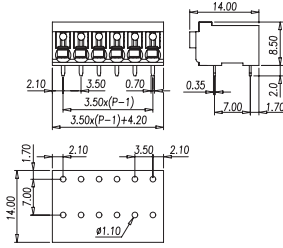


Pitch:3.50mm

Approval		
Technical Data	UL	IEC
Rated voltage	300V	130V
Rated current	10A	17.5A
Conductor cross-section, solid (AWG/mm <sup>2</sup> )	28-16	0.2-1.5
Conductor cross-section, flexible (AWG/mm <sup>2</sup> )	28-16	0.2-1.5
Rated impulse voltage	2.5KV	
Torque(N-m)		
Screw		
Wire strip length	9mm	
Pole	Cat.No.	
02	0138-5102L1.5	
03	0138-5103L1.5	
:	:	
:	:	

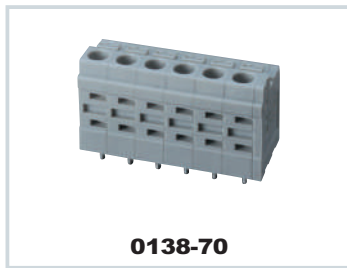


**0138-51XXL2.0**

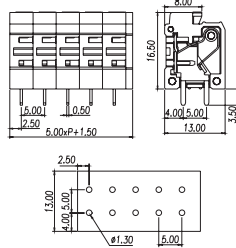


Pitch:3.50mm

Approval		
Technical Data	UL	IEC
Rated voltage	300V	130V
Rated current	10A	17.5A
Conductor cross-section, solid (AWG/mm <sup>2</sup> )	28-16	0.2-1.5
Conductor cross-section, flexible (AWG/mm <sup>2</sup> )	28-16	0.2-1.5
Rated impulse voltage	2.5KV	
Torque(N-m)		
Screw		
Wire strip length	9mm	
Pole	Cat.No.	
02	0138-5102L2.0	
03	0138-5103L2.0	
:	:	
:	:	



**0138-70**

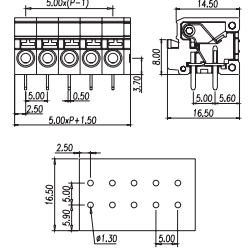


Pitch:5.00mm

Approval		
Technical Data	UL	IEC
Rated voltage	300V	250V
Rated current	10A	17.5A
Conductor cross-section, solid (AWG/mm <sup>2</sup> )	28-14	0.2-1.5
Conductor cross-section, flexible (AWG/mm <sup>2</sup> )	0.2-1.5	
Rated impulse voltage	4KV	
Torque(N-m)		
Screw		
Wire strip length	10mm	
Pole	Cat.No.	
02	0138-7002	
03	0138-7003	
:	:	
:	:	



**0138-76**

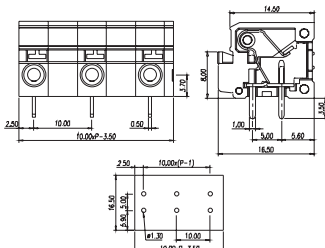


Pitch:5.00mm

Approval		
Technical Data	UL	IEC
Rated voltage	300V	250V
Rated current	10A	17.5A
Conductor cross-section, solid (AWG/mm <sup>2</sup> )	28-14	0.2-1.5
Conductor cross-section, flexible (AWG/mm <sup>2</sup> )	0.2-1.5	
Rated impulse voltage	4KV	
Torque(N-m)		
Screw		
Wire strip length	10mm	
Pole	Cat.No.	
02	0138-7602	
03	0138-7603	
:	:	
:	:	



**0138-78**

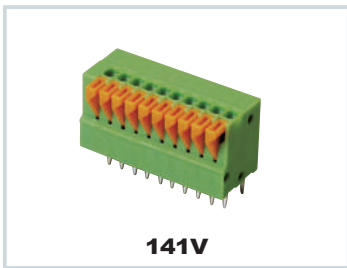


Pitch:10.00mm

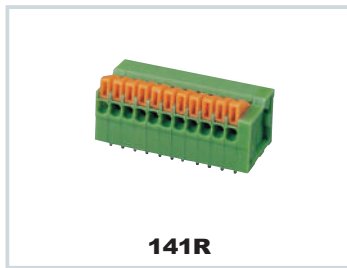
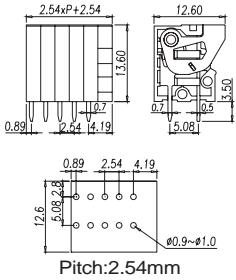
Approval		
Technical Data	UL	IEC
Rated voltage	300V	450V
Rated current	10A	17.5A
Conductor cross-section, solid (AWG/mm <sup>2</sup> )	26-14	0.2-1.5
Conductor cross-section, flexible (AWG/mm <sup>2</sup> )	16-18	0.2-1.5
Rated impulse voltage	8KV	
Torque(N-m)		
Screw		
Wire strip length	10mm	
Pole	Cat.No.	
02	0138-7802	
03	0138-7803	
:	:	
:	:	

## Series 0138

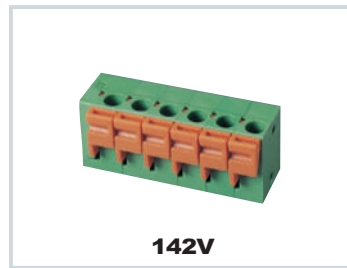
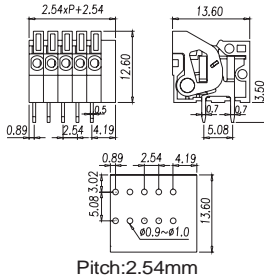
Part number	Pitch (mm)	Material				Pin length (mm)		
		PA66	PA46	LCP	PBT	1.5	2.0	3.5
0138-10XX	2.54	●						●
0138-11XX	2.54	●						●
0138-50XX	3.50		●					●
0138-50XXL	3.50			●				●
0138-50XXL1.5	3.50			●		●		
0138-50XXL2.0	3.50			●			●	
0138-50XXT	3.50				●			●
0138-51XX	3.50		●					●
0138-51XXL	3.50			●				●
0138-51XXL1.5	3.50			●		●		
0138-51XXL2.0	3.50			●			●	
0138-51XXT	3.50				●			●
0138-51XXP5	7.00		●					●
0138-70XX	5.00	●						●
0138-76XX	5.00	●						●
0138-78XX	10.00	●						●



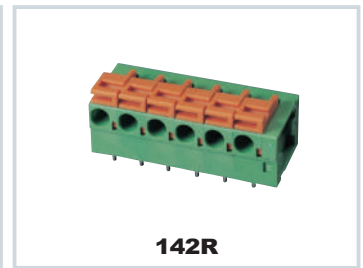
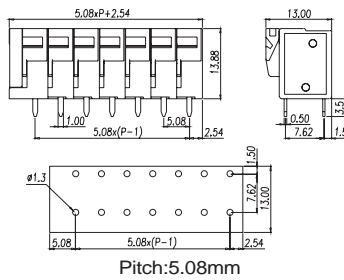
**141V**



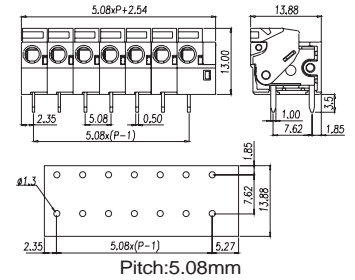
**141R**



**142V**



**142R**

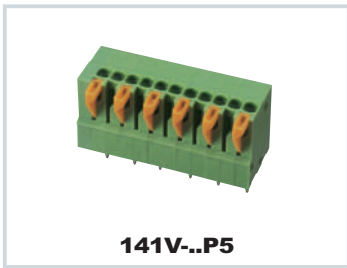


Approval		
Technical Data	UL	IEC
Rated voltage	150V	250V
Rated current	5A	12A
Conductor cross-section, solid (AWG/mm <sup>2</sup> )	26-20	0.5
Conductor cross-section, flexible (AWG/mm <sup>2</sup> )	26-20	0.5
Rated impulse voltage	2.5KV	
Torque(N-m)		
Screw		
Wire strip length	10-11mm	
Pole	Cat.No.	
02	141V-02P	
:	:	
:	:	
24	141V-24P	

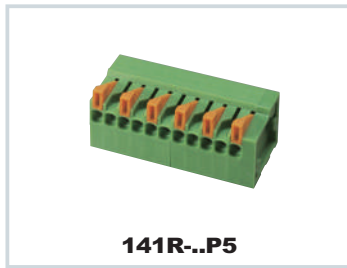
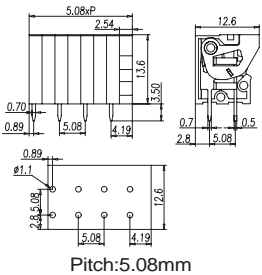
Approval		
Technical Data	UL	IEC
Rated voltage	150V	250V
Rated current	5A	12A
Conductor cross-section, solid (AWG/mm <sup>2</sup> )	26-20	0.5
Conductor cross-section, flexible (AWG/mm <sup>2</sup> )	26-20	0.5
Rated impulse voltage	2.5KV	
Torque(N-m)		
Screw		
Wire strip length	10-11mm	
Pole	Cat.No.	
02	141R-02P	
:	:	
:	:	
24	141R-24P	

Approval		
Technical Data	UL	IEC
Rated voltage	300V	450V
Rated current	10A	17.5A
Conductor cross-section, solid (AWG/mm <sup>2</sup> )	22-14	0.5-1.5
Conductor cross-section, flexible (AWG/mm <sup>2</sup> )	22-14	0.5-1.5
Rated impulse voltage	4KV	
Torque(N-m)		
Screw		
Wire strip length	6-7mm	
Pole	Cat.No.	
02	142V-02P	
:	:	
:	:	
24	142V-24P	

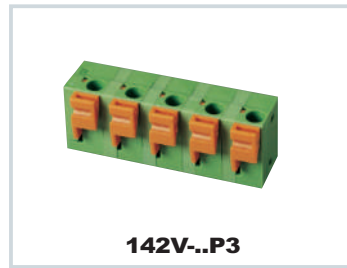
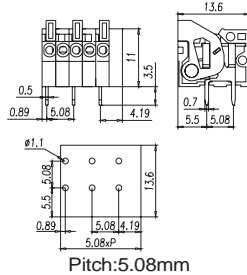
Approval		
Technical Data	UL	IEC
Rated voltage	300V	450V
Rated current	10A	17.5A
Conductor cross-section, solid (AWG/mm <sup>2</sup> )	22-14	0.5-1.5
Conductor cross-section, flexible (AWG/mm <sup>2</sup> )	22-14	0.5-1.5
Rated impulse voltage	4KV	
Torque(N-m)		
Screw		
Wire strip length	6-7mm	
Pole	Cat.No.	
02	142R-02P	
:	:	
:	:	
24	142R-24P	



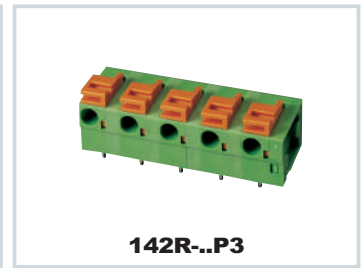
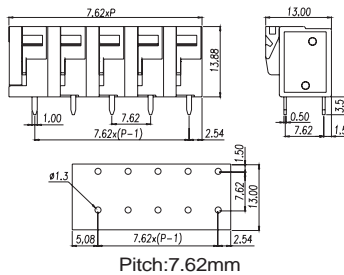
**141V..P5**



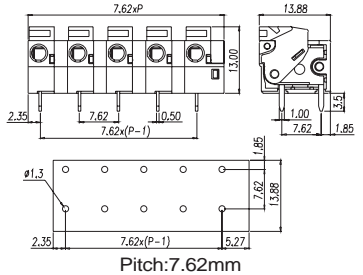
**141R..P5**



**142V..P3**



**142R..P3**

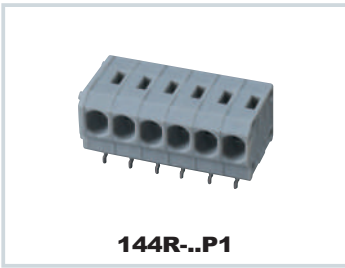


Approval		
Technical Data	UL	IEC
Rated voltage	300V	130V
Rated current	5A	4A
Conductor cross-section, solid (AWG/mm <sup>2</sup> )	26-20	0.5
Conductor cross-section, flexible (AWG/mm <sup>2</sup> )	26-20	0.5
Rated impulse voltage	4KV	
Torque(N-m)		
Screw		
Wire strip length	10-11mm	
Pole	Cat.No.	
02	141V-02P5	
:	:	
:	:	
24	141V-24P5	

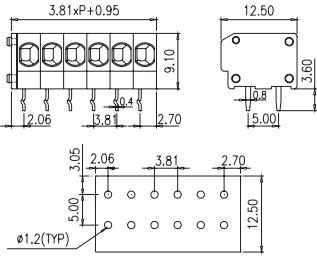
Approval		
Technical Data	UL	IEC
Rated voltage	300V	130V
Rated current	5A	4A
Conductor cross-section, solid (AWG/mm <sup>2</sup> )	26-20	0.5
Conductor cross-section, flexible (AWG/mm <sup>2</sup> )	26-20	0.5
Rated impulse voltage	4KV	
Torque(N-m)		
Screw		
Wire strip length	10-11mm	
Pole	Cat.No.	
02	141R-02P5	
:	:	
:	:	
24	141R-24P5	

Approval		
Technical Data	UL	IEC
Rated voltage	300V	750V
Rated current	10A	17.5A
Conductor cross-section, solid (AWG/mm <sup>2</sup> )	22-14	0.5-1.5
Conductor cross-section, flexible (AWG/mm <sup>2</sup> )	22-14	0.5-1.5
Rated impulse voltage	6KV	
Torque(N-m)		
Screw		
Wire strip length	6-7mm	
Pole	Cat.No.	
02	142V-02P3	
:	:	
:	:	
24	142V-24P3	

Approval		
Technical Data	UL	IEC
Rated voltage	300V	750V
Rated current	10A	17.5A
Conductor cross-section, solid (AWG/mm <sup>2</sup> )	22-14	0.5-1.5
Conductor cross-section, flexible (AWG/mm <sup>2</sup> )	22-14	0.5-1.5
Rated impulse voltage	6KV	
Torque(N-m)		
Screw		
Wire strip length	6-7mm	
Pole	Cat.No.	
02	142R-02P3	
:	:	
:	:	
24	142R-24P3	

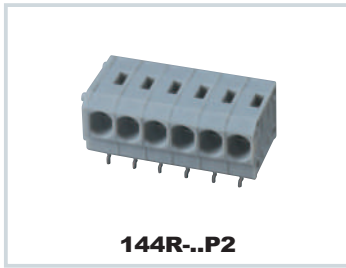


**144R..P1**

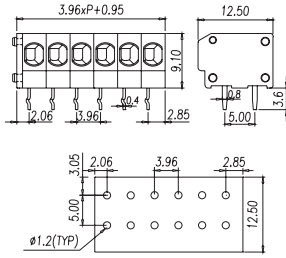


Pitch:3.81mm

Approval			
Technical Data	UL	IEC	
Rated voltage	300V	250V	
Rated current	10A	17.5A	
Conductor cross-section, solid (AWG/mm <sup>2</sup> )	20~14	0.5~1.5	
Conductor cross-section, flexible (AWG/mm <sup>2</sup> )	20~14	0.5~1.5	
Rated impulse voltage		4KV	
Torque(N-m)			
Wire strip length	6~7mm		
End cover	144E		
Pole	Cat.No.		
02	144R-02P1		
:	:		
:	:		
24	144R-24P1		

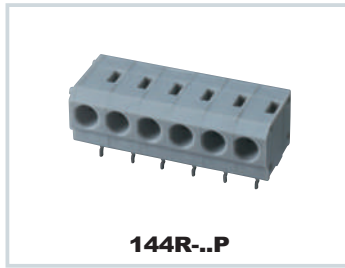


**144R..P2**

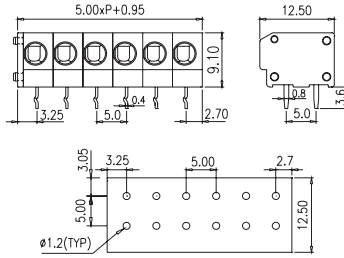


Pitch:3.96mm

Approval			
Technical Data	UL	IEC	
Rated voltage	300V	250V	
Rated current	10A	17.5A	
Conductor cross-section, solid (AWG/mm <sup>2</sup> )	20~14	0.5~1.5	
Conductor cross-section, flexible (AWG/mm <sup>2</sup> )	20~14	0.5~1.5	
Rated impulse voltage		4KV	
Torque(N-m)			
Wire strip length	6~7mm		
End cover	144E		
Pole	Cat.No.		
02	144R-02P2		
:	:		
:	:		
24	144R-24P2		

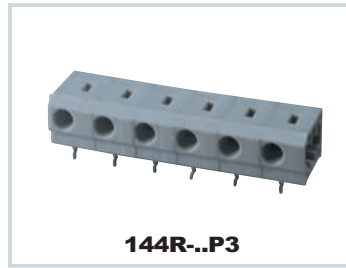


**144R..P**

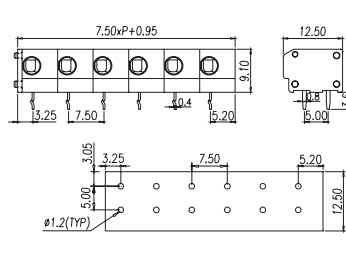


Pitch:5.00mm

Approval			
Technical Data	UL	IEC	
Rated voltage	300V	450V	
Rated current	10A	24A	
Conductor cross-section, solid (AWG/mm <sup>2</sup> )	20~14	0.5~2.5	
Conductor cross-section, flexible (AWG/mm <sup>2</sup> )	20~14	0.5~2.5	
Rated impulse voltage		4KV	
Torque(N-m)			
Wire strip length	6~7mm		
End cover	144E		
Pole	Cat.No.		
02	144R-02P		
:	:		
:	:		
24	144R-24P		



**144R..P3**

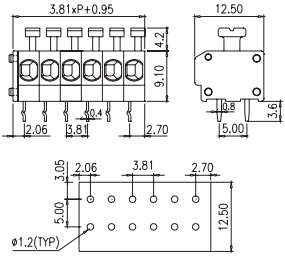


Pitch:7.50mm

Approval			
Technical Data	UL	IEC	
Rated voltage	300V	750V	
Rated current	10A	24A	
Conductor cross-section, solid (AWG/mm <sup>2</sup> )	20~14	0.5~2.5	
Conductor cross-section, flexible (AWG/mm <sup>2</sup> )	20~14	0.5~2.5	
Rated impulse voltage		6KV	
Torque(N-m)			
Wire strip length	6~7mm		
End cover	144E		
Pole	Cat.No.		
02	144R-02P3		
:	:		
:	:		
24	144R-24P3		



**144RA..P1**

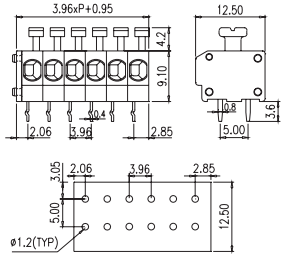


Pitch:3.81mm

Approval			
Technical Data	UL	IEC	
Rated voltage	300V	250V	
Rated current	10A	17.5A	
Conductor cross-section, solid (AWG/mm <sup>2</sup> )	22~14	0.5~1.5	
Conductor cross-section, flexible (AWG/mm <sup>2</sup> )	22~14	0.5~1.5	
Rated impulse voltage		4KV	
Torque(N-m)			
Wire strip length	6~7mm		
End cover	144E		
Pole	Cat.No.		
02	144RA-02P1		
:	:		
:	:		
24	144RA-24P1		



**144RA..P2**

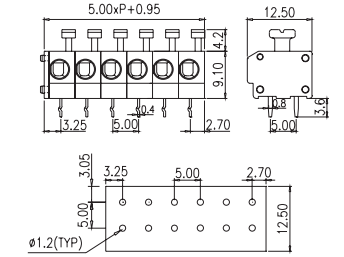


Pitch:3.96mm

Approval			
Technical Data	UL	IEC	
Rated voltage	300V	250V	
Rated current	10A	17.5A	
Conductor cross-section, solid (AWG/mm <sup>2</sup> )	22~14	0.5~1.5	
Conductor cross-section, flexible (AWG/mm <sup>2</sup> )	22~14	0.5~1.5	
Rated impulse voltage		4KV	
Torque(N-m)			
Wire strip length	6~7mm		
End cover	144E		
Pole	Cat.No.		
02	144RA-02P2		
:	:		
:	:		
24	144RA-24P2		

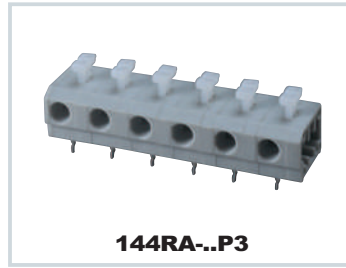


**144RA..P**

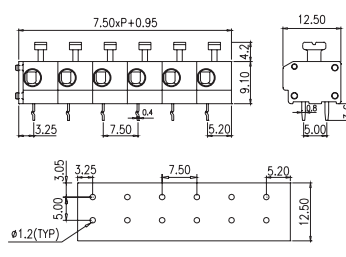


Pitch:5.00mm

Approval			
Technical Data	UL	IEC	
Rated voltage	300V	450V	
Rated current	10A	24A	
Conductor cross-section, solid (AWG/mm <sup>2</sup> )	20~14	0.5~2.5	
Conductor cross-section, flexible (AWG/mm <sup>2</sup> )	20~14	0.5~2.5	
Rated impulse voltage		4KV	
Torque(N-m)			
Wire strip length	6~7mm		
End cover	144E		
Pole	Cat.No.		
02	144RA-02P		
:	:		
:	:		
24	144RA-24P		

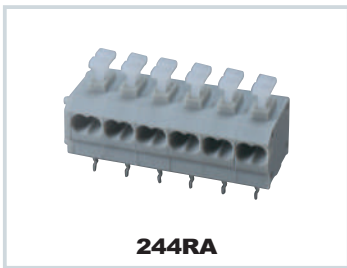


**144RA..P3**



Pitch:7.50mm

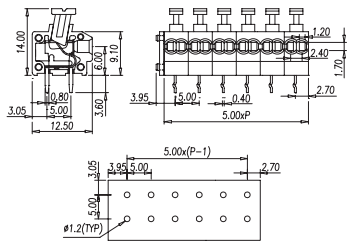
Approval			
Technical Data	UL	IEC	
Rated voltage	300V	750V	
Rated current	10A	24A	
Conductor cross-section, solid (AWG/mm <sup>2</sup> )	20~14	0.5~2.5	
Conductor cross-section, flexible (AWG/mm <sup>2</sup> )	20~14	0.5~2.5	
Rated impulse voltage		6KV	
Torque(N-m)			
Wire strip length	6~7mm		
End cover	144E		
Pole	Cat.No.		
02	144RA-02P3		
:	:		
:	:		
24	144RA-24P3		



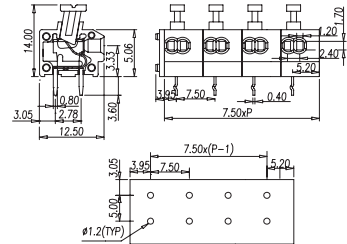
**244RA**



**244RA-..P3**



Pitch:5.00mm



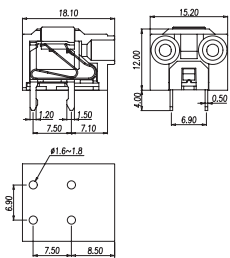
Pitch:7.50mm

Approval		
Technical Data	UL	IEC
Rated voltage	300V	450V
Rated current	10A	12A
Conductor cross-section, solid (AWG/mm <sup>2</sup> )	24~18	0.5~0.75
Conductor cross-section, flexible (AWG/mm <sup>2</sup> )	24~18	0.5~0.75
Rated impulse voltage	4KV	
Torque(N-m)		
Wire strip length	9~10mm	
End cover	0056A4**00	
Pole	Cat.No.	
02	244RA-02P	
:	:	
:	:	
24	244RA-24P	

Approval		
Technical Data	UL	IEC
Rated voltage	300V	750V
Rated current	10A	12A
Conductor cross-section, solid (AWG/mm <sup>2</sup> )	24~18	0.5~0.75
Conductor cross-section, flexible (AWG/mm <sup>2</sup> )	24~18	0.5~0.75
Rated impulse voltage	6KV	
Torque(N-m)		
Wire strip length	9~10mm	
End cover	0056A4**00	
Pole	Cat.No.	
02	244RA-02P3	
:	:	
:	:	
24	244RA-24P3	



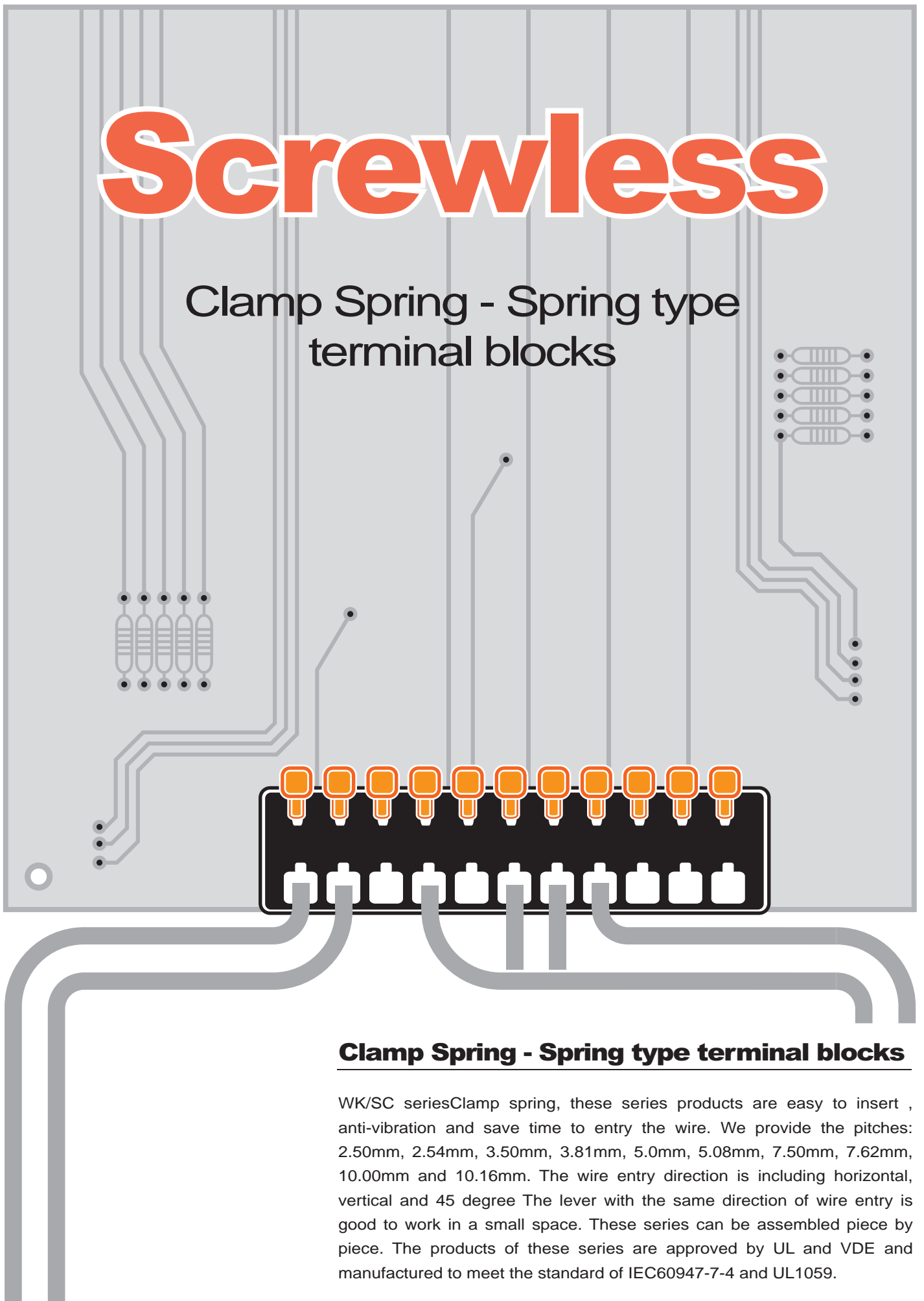
**0146-0102**



Approval		
Technical Data	UL	IEC
Rated voltage	300V	750V
Rated current	10A	17.5A
Conductor cross-section, solid (AWG/mm <sup>2</sup> )	20~12	0.5~2.5
Conductor cross-section, flexible (AWG/mm <sup>2</sup> )	20~14	0.5~2.5
Rated impulse voltage	4KV	
Torque(N-m)		
Screw		
Wire strip length	14mm	
Pole	Cat.No.	
02	0146-0102	

# Screwless

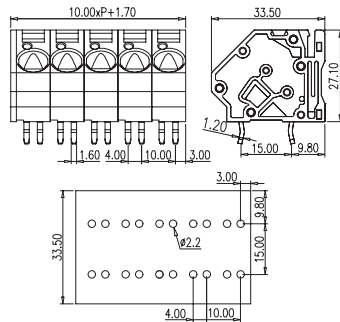
## Clamp Spring - Spring type terminal blocks



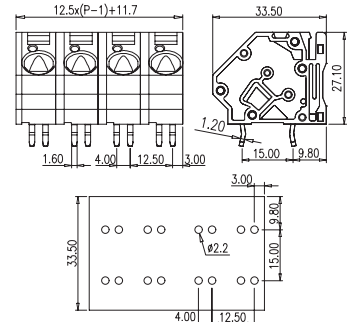
### **Clamp Spring - Spring type terminal blocks**

WK/SC series Clamp spring, these series products are easy to insert , anti-vibration and save time to entry the wire. We provide the pitches: 2.50mm, 2.54mm, 3.50mm, 3.81mm, 5.0mm, 5.08mm, 7.50mm, 7.62mm, 10.00mm and 10.16mm. The wire entry direction is including horizontal, vertical and 45 degree The lever with the same direction of wire entry is good to work in a small space. These series can be assembled piece by piece. The products of these series are approved by UL and VDE and manufactured to meet the standard of IEC60947-7-4 and UL1059.

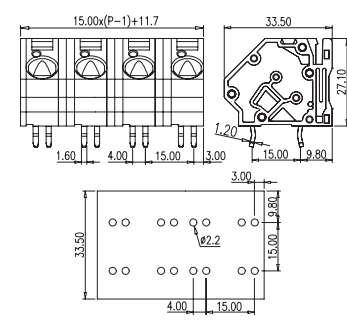




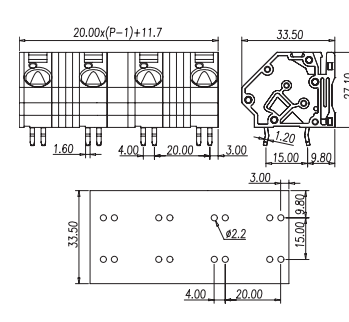
Pitch:10.00mm



Pitch:12.50mm



Pitch:15.00mm



Pitch:20.00mm

Approval		
Technical Data	UL	IEC
Rated voltage	300V	450V
Rated current	57A	76A
Conductor cross-section, solid (AWG/mm <sup>2</sup> )	24-6	0.5-16
Conductor cross-section, flexible (AWG/mm <sup>2</sup> )	24-6	0.5-16
Rated impulse voltage	4KV	
Wire strip length	14-15mm	
End Cover		

Approval		
Technical Data	UL	IEC
Rated voltage	300V	750V
Rated current	57A	76A
Conductor cross-section, solid (AWG/mm <sup>2</sup> )	24-6	0.5-16
Conductor cross-section, flexible (AWG/mm <sup>2</sup> )	24-6	0.5-16
Rated impulse voltage	6KV	
Wire strip length	14-15mm	
End Cover		

Approval		
Technical Data	UL	IEC
Rated voltage	300V/600V	1000V
Rated current	57A / 5A	76A
Conductor cross-section, solid (AWG/mm <sup>2</sup> )	24-6	0.5-16
Conductor cross-section, flexible (AWG/mm <sup>2</sup> )	24-6	0.5-16
Rated impulse voltage	8KV	
Wire strip length	14-15mm	
End Cover		

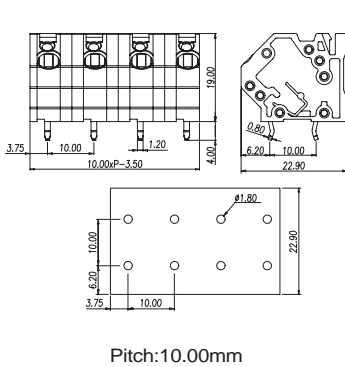
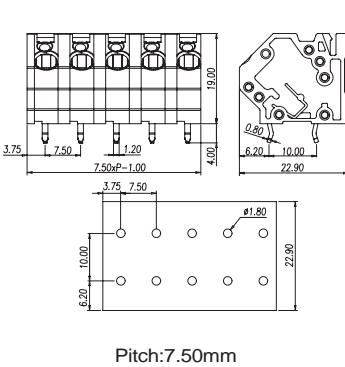
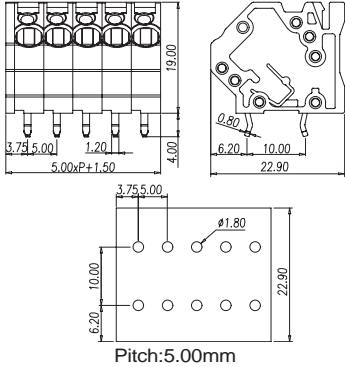
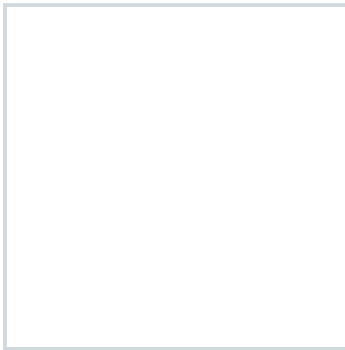
Approval		
Technical Data	UL	IEC
Rated voltage	600V	1000V
Rated current	57A	76A
Conductor cross-section, solid (AWG/mm <sup>2</sup> )	24-6	0.5-16
Conductor cross-section, flexible (AWG/mm <sup>2</sup> )	24-6	0.5-16
Rated impulse voltage	8KV	
Wire strip length	14-15mm	
End Cover		

Pole	Cat.No.
02	WSKA100-02P
03	WSKA100-03P
:	:

Pole	Cat.No.
02	WSKA100-02P1
03	WSKA100-03P1
:	:

Pole	Cat.No.
02	WSKA100-02P2
03	WSKA100-03P2
:	:

Pole	Cat.No.
02	WSKA100-02P4
03	WSKA100-03P4
:	:



Approval		
Technical Data	UL	IEC
Rated voltage	300V	250V
Rated current	15A	24A
Conductor cross-section, solid (AWG/mm <sup>2</sup> )	28-12	0.5-4
Conductor cross-section, flexible (AWG/mm <sup>2</sup> )		0.5-4
Rated impulse voltage		4KV
Wire strip length	10-11mm	
End Cover		

Approval		
Technical Data	UL	IEC
Rated voltage	300V	750V
Rated current	15A	24A
Conductor cross-section, solid (AWG/mm <sup>2</sup> )	28-12	0.5-4
Conductor cross-section, flexible (AWG/mm <sup>2</sup> )		0.5-4
Rated impulse voltage		6KV
Wire strip length	10-11mm	
End Cover		

Approval		
Technical Data	UL	IEC
Rated voltage	300V	1000V
Rated current	15A	24A
Conductor cross-section, solid (AWG/mm <sup>2</sup> )	28-12	0.5-4
Conductor cross-section, flexible (AWG/mm <sup>2</sup> )		0.5-4
Rated impulse voltage		8KV
Wire strip length	10-11mm	
End Cover		

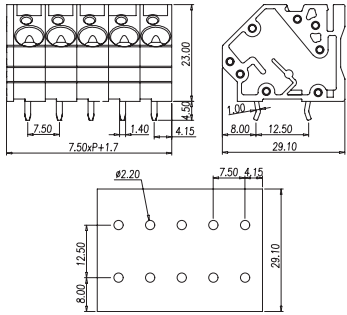
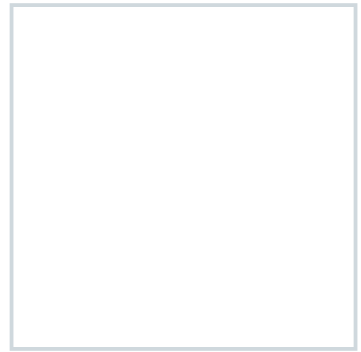
Pole	Cat.No.
02	WSKA500S-02P
03	WSKA500S-03P
:	:

Pole	Cat.No.
02	WSKA500S-02P1
03	WSKA500S-03P1
:	:

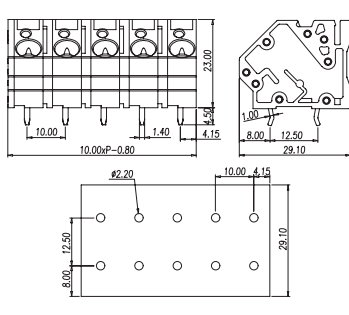
Pole	Cat.No.
02	WSKA500S-02P2
03	WSKA500S-03P2
:	:

Pole	Cat.No.
02	WSKA500S-02P2
03	WSKA500S-03P2
:	:

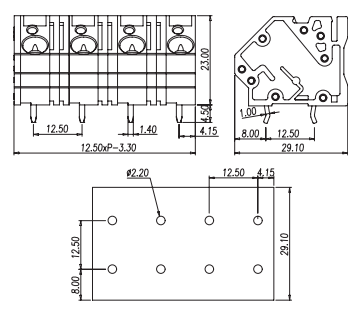
Pole	Cat.No.
02	WSKA500S-02P2
03	WSKA500S-03P2
:	:



Pitch: 7.50mm



Pitch: 10.00mm



Pitch: 12.50mm

Approval		
Technical Data	UL	IEC
Rated voltage	300V	750V
Rated current	30A	41A
Conductor cross-section, solid (AWG/mm <sup>2</sup> )	0.5-6	
Conductor cross-section, flexible (AWG/mm <sup>2</sup> )	26-10	0.5-6
Rated impulse voltage	6KV	
Wire strip length	14-15mm	
End Cover		

Approval		
Technical Data	UL	IEC
Rated voltage	300V/600V	1000V
Rated current	30A/5A	41A
Conductor cross-section, solid (AWG/mm <sup>2</sup> )	0.5-6	
Conductor cross-section, flexible (AWG/mm <sup>2</sup> )	26-10	0.5-6
Rated impulse voltage	8KV	
Wire strip length	14-15mm	
End Cover		

Approval		
Technical Data	UL	IEC
Rated voltage	600V	1000V
Rated current	30A	41A
Conductor cross-section, solid (AWG/mm <sup>2</sup> )	0.5-6	
Conductor cross-section, flexible (AWG/mm <sup>2</sup> )	26-10	0.5-6
Rated impulse voltage	8KV	
Wire strip length	14-15mm	
End Cover		

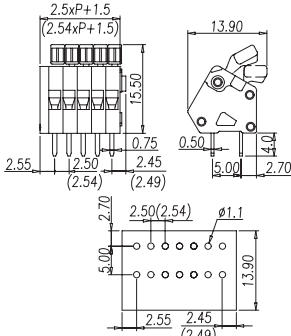
Pole	Cat.No.
02	WSKA750S-02P
03	WSKA750S-03P
:	:

Pole	Cat.No.
02	WSKA750S-02P1
03	WSKA750S-03P1
:	:

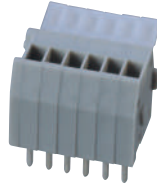
Pole	Cat.No.
02	WSKA750S-02P2
03	WSKA750S-03P2
:	:



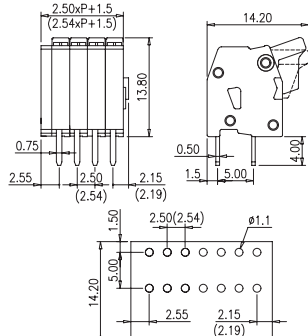
**WKA250A(WKA254A)**



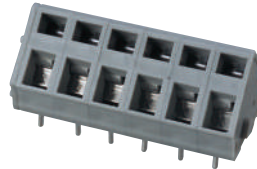
Pitch: 2.50mm(2.54mm)



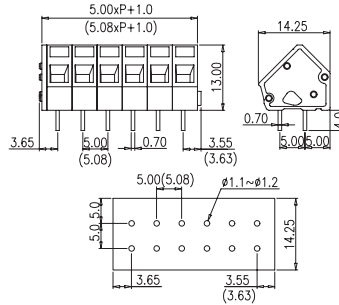
**WKV250A(WKV254A)**



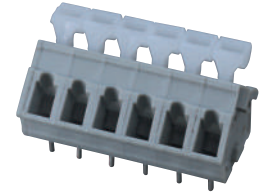
Pitch: 2.50mm(2.54mm)



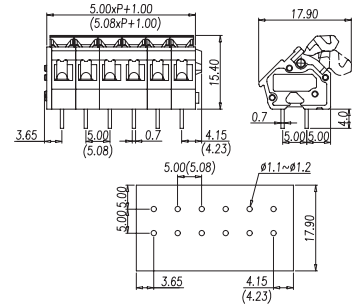
**WKA500(WKA508)**



Pitch: 5.00mm(5.08mm)



**WKA500A(WKA508A)**



Pitch: 5.00mm(5.08mm)

Approval			
Technical Data	UL	IEC	
Rated voltage	300V	130V	
Rated current	4A	6A	
Conductor cross-section, solid (AWG/mm <sup>2</sup> )	28~20	0.5	
Conductor cross-section, flexible (AWG/mm <sup>2</sup> )		0.5	
Rated impulse voltage		2.5KV	
Wire strip length	5~6mm		

Approval			
Technical Data	UL	IEC	
Rated voltage	300V	130V	
Rated current	4A	6A	
Conductor cross-section, solid (AWG/mm <sup>2</sup> )	28~20	0.5	
Conductor cross-section, flexible (AWG/mm <sup>2</sup> )		0.5	
Rated impulse voltage		2.5KV	
Wire strip length	5~6mm		

Approval			
Technical Data	UL	IEC	
Rated voltage	300V	450V	
Rated current	15A	24A	
Conductor cross-section, solid (AWG/mm <sup>2</sup> )	28~12	0.5~2.5	
Conductor cross-section, flexible (AWG/mm <sup>2</sup> )	28~12	0.5~2.5	
Rated impulse voltage		4KV	
Wire strip length	5~6mm		

Approval			
Technical Data	UL	IEC	
Rated voltage	300V	450V	
Rated current	15A	24A	
Conductor cross-section, solid (AWG/mm <sup>2</sup> )	28~12	0.5~2.5	
Conductor cross-section, flexible (AWG/mm <sup>2</sup> )	28~12	0.5~2.5	
Rated impulse voltage		4KV	
Wire strip length	5~6mm		

Single Pole	Cat.No.
	WKA250A-01X(WKA254A-01X)
End Cover	WKA250AC
Optional color	Cat.No.
●	WKA250A-01X(WKA508A-01X)
●	WKA250A-01X-GN(WKA254A-01X-GN)
●	WKA250A-01X-RD(WKA254A-01X-RD)
●	WKA250A-01X-BL(WKA254A-01X-BL)
●	WKA250A-01X-BK(WKA254A-01X-BK)
●	WKA250A-01X-OR(WKA254A-01X-OR)

Single Pole	Cat.No.
	WKV250A-01X(WKV254A-01X)
End Cover	WKV250AC
Optional color	Cat.No.
●	WKV250A-01X(WKV508A-01X)
●	WKV250A-01X-GN(WKV254A-01X-GN)
●	WKV250A-01X-RD(WKV254A-01X-RD)
●	WKV250A-01X-BL(WKV254A-01X-BL)
●	WKV250A-01X-BK(WKV254A-01X-BK)
●	WKV250A-01X-OR(WKV254A-01X-OR)

Single Pole	Cat.No.
	WKA500-01X(WKA508-01X)
End Cover	WKA500C
Optional color	Cat.No.
●	WKA500-01X(WKA508-01X)
●	WKA500-01X-GN(WKA508-01X-GN)
●	WKA500-01X-RD(WKA508-01X-RD)
●	WKA500-01X-BL(WKA508-01X-BL)
●	WKA500-01X-BK(WKA508-01X-BK)
●	WKA500-01X-OR(WKA508-01X-OR)

Single Pole	Cat.No.
	WKA500A-01X(WKA508A-01X)
End Cover	WKA500AC
Optional color	Cat.No.
●	WKA500A-01X(WKA508A-01X)
●	WKA500A-01X-GN(WKA508A-01X-GN)
●	WKA500A-01X-RD(WKA508A-01X-RD)
●	WKA500A-01X-BL(WKA508A-01X-BL)
●	WKA500A-01X-BK(WKA508A-01X-BK)
●	WKA500A-01X-OR(WKA508A-01X-OR)

Pole	Cat.No.
02	WKA250A-02P(WKA254A-02P)
03	WKA250A-03P(WKA254A-03P)
04	WKA250A-04P(WKA254A-04P)
05	WKA250A-05P(WKA254A-05P)
06	WKA250A-06P(WKA254A-06P)
07	WKA250A-07P(WKA254A-07P)
08	WKA250A-08P(WKA254A-08P)
09	WKA250A-09P(WKA254A-09P)
10	WKA250A-10P(WKA254A-10P)
11	WKA250A-11P(WKA254A-11P)
12	WKA250A-12P(WKA254A-12P)
⋮	⋮
⋮	⋮

Pole	Cat.No.
02	WKV250A-02P(WKV254A-02P)
03	WKV250A-03P(WKV254A-03P)
04	WKV250A-04P(WKV254A-04P)
05	WKV250A-05P(WKV254A-05P)
06	WKV250A-06P(WKV254A-06P)
07	WKV250A-07P(WKV254A-07P)
08	WKV250A-08P(WKV254A-08P)
09	WKV250A-09P(WKV254A-09P)
10	WKV250A-10P(WKV254A-10P)
11	WKV250A-11P(WKV254A-11P)
12	WKV250A-12P(WKV254A-12P)
⋮	⋮
⋮	⋮

Pole	Cat.No.
02	WKA500-02P(WKA508-02P)
03	WKA500-03P(WKA508-03P)
04	WKA500-04P(WKA508-04P)
05	WKA500-05P(WKA508-05P)
06	WKA500-06P(WKA508-06P)
07	WKA500-07P(WKA508-07P)
08	WKA500-08P(WKA508-08P)
09	WKA500-09P(WKA508-09P)
10	WKA500-10P(WKA508-10P)
11	WKA500-11P(WKA508-11P)
12	WKA500-12P(WKA508-12P)
⋮	⋮
⋮	⋮

Pole	Cat.No.
02	WKA500A-02P(WKA508A-02P)
03	WKA500A-03P(WKA508A-03P)
04	WKA500A-04P(WKA508A-04P)
05	WKA500A-05P(WKA508A-05P)
06	WKA500A-06P(WKA508A-06P)
07	WKA500A-07P(WKA508A-07P)
08	WKA500A-08P(WKA508A-08P)
09	WKA500A-09P(WKA508A-09P)
10	WKA500A-10P(WKA508A-10P)
11	WKA500A-11P(WKA508A-11P)
12	WKA500A-12P(WKA508A-12P)
⋮	⋮
⋮	⋮

Optional color	Cat.No.
●	WKA250A-XXP(WKA254A-XXP)
●	WKA250A-XXP-GN(WKA254A-XXP-GN)
●	WKA250A-XXP-RD(WKA254A-XXP-RD)
●	WKA250A-XXP-BL(WKA254A-XXP-BL)
●	WKA250A-XXP-BK(WKA254A-XXP-BK)
●	WKA250A-XXP-OR(WKA254A-XXP-OR)

Optional color	Cat.No.
●	WKV250A-XXP(WKV254A-XXP)
●	WKV250A-XXP-GN(WKV254A-XXP-GN)
●	WKV250A-XXP-RD(WKV254A-XXP-RD)
●	WKV250A-XXP-BL(WKV254A-XXP-BL)
●	WKV250A-XXP-BK(WKV254A-XXP-BK)
●	WKV250A-XXP-OR(WKV254A-XXP-OR)

Optional color	Cat.No.
●	WKA500-XXP(WKA508-XXP)
●	WKA500-XXP-GN(WKA508-XXP-GN)
●	WKA500-XXP-RD(WKA508-XXP-RD)
●	WKA500-XXP-BL(WKA508-XXP-BL)
●	WKA500-XXP-BK(WKA508-XXP-BK)
●	WKA500-XXP-OR(WKA508-XXP-OR)

Optional color	Cat.No.
●	WKA500A-XXP(WKA508A-XXP)
●	WKA500A-XXP-GN(WKA508A-XXP-GN)
●	WKA500A-XXP-RD(WKA508A-XXP-RD)
●	WKA500A-XXP-BL(WKA508A-XXP-BL)
●	WKA500A-XXP-BK(WKA508A-XXP-BK)
●	WKA500A-XXP-OR(WKA508A-XXP-OR)



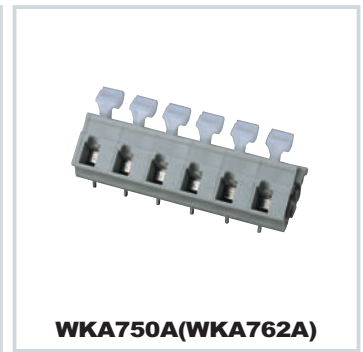
**WKV500A(WKV508A)**



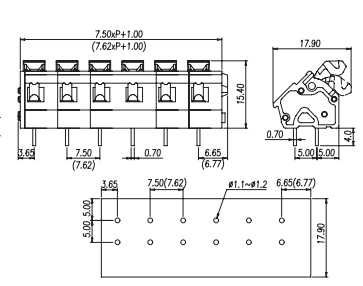
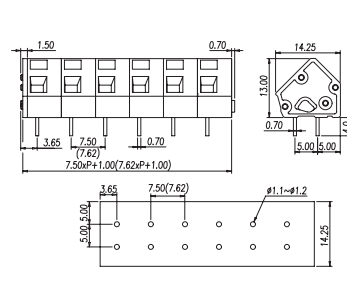
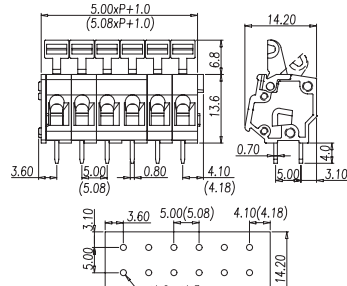
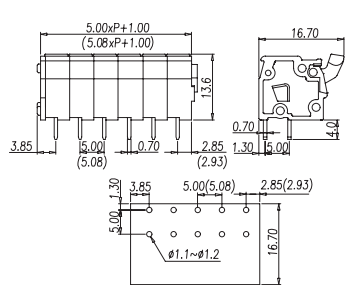
**WKR500A(WKR508A)**



**WKA750(WKA762)**



**WKA750A(WKA762A)**



Pitch: 5.00mm (5.08mm)

Pitch: 5.00mm (5.08mm)

Pitch: 7.50mm (7.62mm)

Pitch: 7.50mm (7.62mm)

Approval		
Technical Data	UL	IEC
Rated voltage	300V	450V
Rated current	15A	24A
Conductor cross-section, solid (AWG/mm <sup>2</sup> )	28-12	0.5-2.5
Conductor cross-section, flexible (AWG/mm <sup>2</sup> )	28-12	0.5-2.5
Rated impulse voltage	4KV	
Wire strip length	5-6mm	

Approval		
Technical Data	UL	IEC
Rated voltage	300V	450V
Rated current	15A	24A
Conductor cross-section, solid (AWG/mm <sup>2</sup> )	28-12	0.5-2.5
Conductor cross-section, flexible (AWG/mm <sup>2</sup> )	28-12	0.5-2.5
Rated impulse voltage	4KV	
Wire strip length	5-6mm	

Approval		
Technical Data	UL	IEC
Rated voltage	300V	450V
Rated current	15A	24A
Conductor cross-section, solid (AWG/mm <sup>2</sup> )	28-12	0.5-2.5
Conductor cross-section, flexible (AWG/mm <sup>2</sup> )	28-12	0.5-2.5
Rated impulse voltage	6KV	
Wire strip length	5-6mm	

Approval		
Technical Data	UL	IEC
Rated voltage	300V	450V
Rated current	15A	24A
Conductor cross-section, solid (AWG/mm <sup>2</sup> )	28-12	0.5-2.5
Conductor cross-section, flexible (AWG/mm <sup>2</sup> )	28-12	0.5-2.5
Rated impulse voltage	6KV	
Wire strip length	5-6mm	

Single Pole	Cat.No.
WKV500A-01X(WKV508A-01X)	
End Cover	WKV500AC
Optional color	Cat.No.
WKV500A-01X(WKV508A-01X)	
WKV500A-01X-GN(WKV508A-01X-GN)	
WKV500A-01X-RD(WKV508A-01X-RD)	
WKV500A-01X-BL(WKV508A-01X-BL)	
WKV500A-01X-BK(WKV508A-01X-BK)	
WKV500A-01X-OR(WKV508A-01X-OR)	

Single Pole	Cat.No.
WKR500A-01X(WKR508A-01X)	
End Cover	WKR500AC
Optional color	Cat.No.
WKR500A-01X(WKR508A-01X)	
WKR500A-01X-GN(WKR508A-01X-GN)	
WKR500A-01X-RD(WKR508A-01X-RD)	
WKR500A-01X-BL(WKR508A-01X-BL)	
WKR500A-01X-BK(WKR508A-01X-BK)	
WKR500A-01X-OR(WKR508A-01X-OR)	

Single Pole	Cat.No.
WKA750-01X(WKA762-01X)	
End Cover	WKA500AC
Optional color	Cat.No.
WKA750-01X(WKA762-01X)	
WKA750-01X-GN(WKA762-01X-GN)	
WKA750-01X-RD(WKA762-01X-RD)	
WKA750-01X-BL(WKA762-01X-BL)	
WKA750-01X-BK(WKA762-01X-BK)	
WKA750-01X-OR(WKA762-01X-OR)	

Single Pole	Cat.No.
WKA750A-01X(WKA762A-01X)	
End Cover	WKA500AC
Optional color	Cat.No.
WKA750A-01X(WKA762A-01X)	
WKA750A-01X-GN(WKA762A-01X-GN)	
WKA750A-01X-RD(WKA762A-01X-RD)	
WKA750A-01X-BL(WKA762A-01X-BL)	
WKA750A-01X-BK(WKA762A-01X-BK)	
WKA750A-01X-OR(WKA762A-01X-OR)	

Pole	Cat.No.
02	WKV500A-02P(WKV508A-02P)
03	WKV500A-03P(WKV508A-03P)
04	WKV500A-04P(WKV508A-04P)
05	WKV500A-05P(WKV508A-05P)
06	WKV500A-06P(WKV508A-06P)
07	WKV500A-07P(WKV508A-07P)
08	WKV500A-08P(WKV508A-08P)
09	WKV500A-09P(WKV508A-09P)
10	WKV500A-10P(WKV508A-10P)
11	WKV500A-11P(WKV508A-11P)
12	WKV500A-12P(WKV508A-12P)
:	:
:	:

Pole	Cat.No.
02	WKR500A-02P(WKR508A-02P)
03	WKR500A-03P(WKR508A-03P)
04	WKR500A-04P(WKR508A-04P)
05	WKR500A-05P(WKR508A-05P)
06	WKR500A-06P(WKR508A-06P)
07	WKR500A-07P(WKR508A-07P)
08	WKR500A-08P(WKR508A-08P)
09	WKR500A-09P(WKR508A-09P)
10	WKR500A-10P(WKR508A-10P)
11	WKR500A-11P(WKR508A-11P)
12	WKR500A-12P(WKR508A-12P)
:	:
:	:

Pole	Cat.No.
02	WKA750-02P(WKA762-02P)
03	WKA750-03P(WKA762-03P)
04	WKA750-04P(WKA762-04P)
05	WKA750-05P(WKA762-05P)
06	WKA750-06P(WKA762-06P)
07	WKA750-07P(WKA762-07P)
08	WKA750-08P(WKA762-08P)
09	WKA750-09P(WKA762-09P)
10	WKA750-10P(WKA762-10P)
11	WKA750-11P(WKA762-11P)
12	WKA750-12P(WKA762-12P)
:	:
:	:

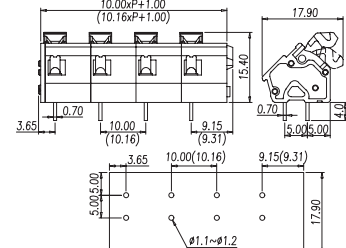
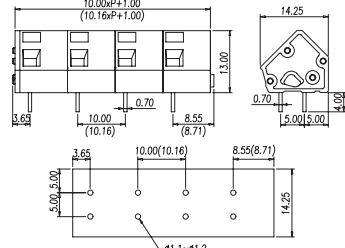
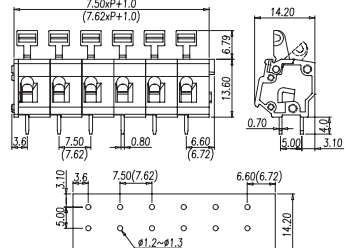
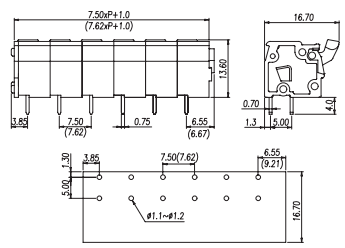
Pole	Cat.No.
02	WKA750A-02P(WKA762A-02P)
03	WKA750A-03P(WKA762A-03P)
04	WKA750A-04P(WKA762A-04P)
05	WKA750A-05P(WKA762A-05P)
06	WKA750A-06P(WKA762A-06P)
07	WKA750A-07P(WKA762A-07P)
08	WKA750A-08P(WKA762A-08P)
09	WKA750A-09P(WKA762A-09P)
10	WKA750A-10P(WKA762A-10P)
11	WKA750A-11P(WKA762A-11P)
12	WKA750A-12P(WKA762A-12P)
:	:
:	:

Optional color	Cat.No.
WKV500A-XXP(WKV508A-XXP)	
WKV500A-XXP-GN(WKV508A-XXP-GN)	
WKV500A-XXP-RD(WKV508A-XXP-RD)	
WKV500A-XXP-BL(WKV508A-XXP-BL)	
WKV500A-XXP-BK(WKV508A-XXP-BK)	
WKV500A-XXP-OR(WKV508A-XXP-OR)	

Optional color	Cat.No.
WKR500A-XXP(WKR508A-XXP)	
WKR500A-XXP-GN(WKR508A-XXP-GN)	
WKR500A-XXP-RD(WKR508A-XXP-RD)	
WKR500A-XXP-BL(WKR508A-XXP-BL)	
WKR500A-XXP-BK(WKR508A-XXP-BK)	
WKR500A-XXP-OR(WKR508A-XXP-OR)	

Optional color	Cat.No.
WKA750-XXP(WKA762-XXP)	
WKA750-XXP-GN(WKA762-XXP-GN)	
WKA750-XXP-RD(WKA762-XXP-RD)	
WKA750-XXP-BL(WKA762-XXP-BL)	
WKA750-XXP-BK(WKA762-XXP-BK)	
WKA750-XXP-OR(WKA762-XXP-OR)	

Optional color	Cat.No.
WKA750A-XXP(WKA762A-XXP)	
WKA750A-XXP-GN(WKA762A-XXP-GN)	
WKA750A-XXP-RD(WKA762A-XXP-RD)	
WKA750A-XXP-BL(WKA762A-XXP-BL)	
WKA750A-XXP-BK(WKA762A-XXP-BK)	
WKA750A-XXP-OR(WKA762A-XXP-OR)	



Pitch: 7.50mm(7.62mm)

Pitch: 7.50mm(7.62mm)

Pitch: 10.00mm(10.16mm)

Pitch: 10.00mm(10.16mm)

Approval	UL	IEC
Technical Data	UL	IEC
Rated voltage	300V	450V
Rated current	15A	24A
Conductor cross-section, solid (AWG/mm <sup>2</sup> )	28-12	0.5-2.5
Conductor cross-section, flexible (AWG/mm <sup>2</sup> )	28-12	0.5-2.5
Rated impulse voltage	6KV	
Wire strip length	5-6mm	

Approval	UL	IEC
Technical Data	UL	IEC
Rated voltage	300V	450V
Rated current	15A	24A
Conductor cross-section, solid (AWG/mm <sup>2</sup> )	28-12	0.5-2.5
Conductor cross-section, flexible (AWG/mm <sup>2</sup> )	28-12	0.5-2.5
Rated impulse voltage	6KV	
Wire strip length	5-6mm	

Approval	UL	IEC
Technical Data	UL	IEC
Rated voltage	300V/600V	750V
Rated current	15A/5A	24A
Conductor cross-section, solid (AWG/mm <sup>2</sup> )	28-12	0.5-2.5
Conductor cross-section, flexible (AWG/mm <sup>2</sup> )	28-12	0.5-2.5
Rated impulse voltage	8KV	
Wire strip length	6-7mm	

Approval	UL	IEC
Technical Data	UL	IEC
Rated voltage	300V/600V	750V
Rated current	15A/5A	24A
Conductor cross-section, solid (AWG/mm <sup>2</sup> )	28-12	0.5-2.5
Conductor cross-section, flexible (AWG/mm <sup>2</sup> )	28-12	0.5-2.5
Rated impulse voltage	8KV	
Wire strip length	6-7mm	

Single Pole	Cat.No.
	WKV750A-01X(WKV762A-01X)
End Cover	WKV500AC
Optional color	Cat.No.
●	WKV750A-01X(WKV762A-01X)
●	WKV750A-01X-GN(WKV762A-01X-GN)
●	WKV750A-01X-RD(WKV762A-01X-RD)
●	WKV750A-01X-BL(WKV762A-01X-BL)
●	WKV750A-01X-BK(WKV762A-01X-BK)
●	WKV750A-01X-OR(WKV762A-01X-OR)

Single Pole	Cat.No.
	WKR750A-01X(WKR762A-01X)
End Cover	WKR500AC
Optional color	Cat.No.
●	WKR750A-01X(WKR762A-01X)
●	WKR750A-01X-GN(WKR762A-01X-GN)
●	WKR750A-01X-RD(WKR762A-01X-RD)
●	WKR750A-01X-BL(WKR762A-01X-BL)
●	WKR750A-01X-BK(WKR762A-01X-BK)
●	WKR750A-01X-OR(WKR762A-01X-OR)

Single Pole	Cat.No.
	WKA100-01X(WKA116-01X)
End Cover	WKA500AC
Optional color	Cat.No.
●	WKA100-01X(WKA116-01X)
●	WKA100-01X-GN(WKA116-01X-GN)
●	WKA100-01X-RD(WKA116-01X-RD)
●	WKA100-01X-BL(WKA116-01X-BL)
●	WKA100-01X-BK(WKA116-01X-BK)
●	WKA100-01X-OR(WKA116-01X-OR)

Single Pole	Cat.No.
	WKA100A-01X(WKA116A-01X)
End Cover	WKA500AC
Optional color	Cat.No.
●	WKA100A-01X(WKA116A-01X)
●	WKA100A-01X-GN(WKA116A-01X-GN)
●	WKA100A-01X-RD(WKA116A-01X-RD)
●	WKA100A-01X-BL(WKA116A-01X-BL)
●	WKA100A-01X-BK(WKA116A-01X-BK)
●	WKA100A-01X-OR(WKA116A-01X-OR)

Pole	Cat.No.
02	WKV750A-02P(WKV762A-02P)
03	WKV750A-03P(WKV762A-03P)
04	WKV750A-04P(WKV762A-04P)
05	WKV750A-05P(WKV762A-05P)
06	WKV750A-06P(WKV762A-06P)
07	WKV750A-07P(WKV762A-07P)
08	WKV750A-08P(WKV762A-08P)
09	WKV750A-09P(WKV762A-09P)
10	WKV750A-10P(WKV762A-10P)
11	WKV750A-11P(WKV762A-11P)
12	WKV750A-12P(WKV762A-12P)
⋮	⋮
⋮	⋮

Pole	Cat.No.
02	WKR750A-02P(WKR762A-02P)
03	WKR750A-03P(WKR762A-03P)
04	WKR750A-04P(WKR762A-04P)
05	WKR750A-05P(WKR762A-05P)
06	WKR750A-06P(WKR762A-06P)
07	WKR750A-07P(WKR762A-07P)
08	WKR750A-08P(WKR762A-08P)
09	WKR750A-09P(WKR762A-09P)
10	WKR750A-10P(WKR762A-10P)
11	WKR750A-11P(WKR762A-11P)
12	WKR750A-12P(WKR762A-12P)
⋮	⋮
⋮	⋮

Pole	Cat.No.
02	WKA100-02P(WKA116-02P)
03	WKA100-03P(WKA116-03P)
04	WKA100-04P(WKA116-04P)
05	WKA100-05P(WKA116-05P)
06	WKA100-06P(WKA116-06P)
07	WKA100-07P(WKA116-07P)
08	WKA100-08P(WKA116-08P)
09	WKA100-09P(WKA116-09P)
10	WKA100-10P(WKA116-10P)
11	WKA100-11P(WKA116-11P)
12	WKA100-12P(WKA116-12P)
⋮	⋮
⋮	⋮

Pole	Cat.No.
02	WKA100A-02P(WKA116A-02P)
03	WKA100A-03P(WKA116A-03P)
04	WKA100A-04P(WKA116A-04P)
05	WKA100A-05P(WKA116A-05P)
06	WKA100A-06P(WKA116A-06P)
07	WKA100A-07P(WKA116A-07P)
08	WKA100A-08P(WKA116A-08P)
09	WKA100A-09P(WKA116A-09P)
10	WKA100A-10P(WKA116A-10P)
11	WKA100A-11P(WKA116A-11P)
12	WKA100A-12P(WKA116A-12P)
⋮	⋮
⋮	⋮

Optional color	Cat.No.
●	WKV750A-XXP(WKV762A-XXP)
●	WKV750A-XXP-GN(WKV762A-XXP-GN)
●	WKV750A-XXP-RD(WKV762A-XXPRD)
●	WKV750A-XXP-BL(WKV762A-XXP-BL)
●	WKV750A-XXP-BK(WKV762A-XXP-BK)
●	WKV750A-XXP-OR(WKV762A-XXP-OR)

Optional color	Cat.No.
●	WKR750A-XXP(WKR762A-XXP)
●	WKR750A-XXP-GN(WKR762A-XXP-GN)
●	WKR750A-XXP-RD(WKR762A-XXPRD)
●	WKR750A-XXP-BL(WKR762A-XXP-BL)
●	WKR750A-XXP-BK(WKR762A-XXP-BK)
●	WKR750A-XXP-OR(WKR762A-XXP-OR)

Optional color	Cat.No.
●	WKA100-XXP(WKA116-XXP)
●	WKA100-XXP-GN(WKA116-XXP-GN)
●	WKA100-XXP-RD(WKA116-XXP-RD)
●	WKA100-XXP-BL(WKA116-XXP-BL)
●	WKA100-XXP-BK(WKA116-XXP-BK)
●	WKA100-XXP-OR(WKA116-XXP-OR)

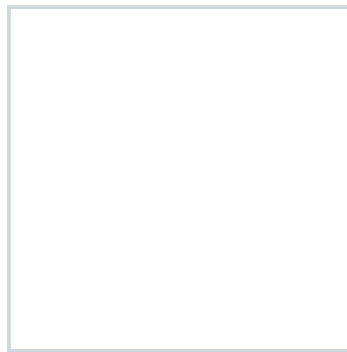
Optional color	Cat.No.
●	WKA100A-XXP(WKA116A-XXP)
●	WKA100A-XXP-GN(WKA116A-XXP-GN)
●	WKA100A-XXP-RD(WKA116A-XXP-RD)
●	WKA100A-XXP-BL(WKA116A-XXP-BL)
●	WKA100A-XXP-BK(WKA116A-XXP-BK)
●	WKA100A-XXP-OR(WKA116A-XXP-OR)



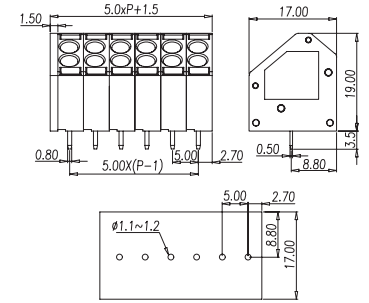
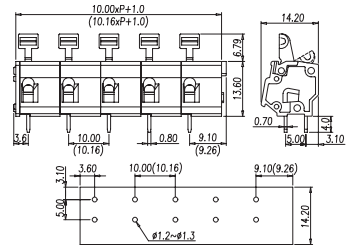
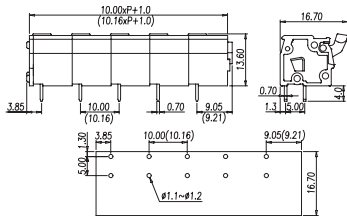
**WKV100A(WKV116A)**



**WKR100A(WKR116A)**



**WKA50B**



Pitch: 10.00mm(10.16mm)

Pitch: 10.00mm(10.16mm)

Pitch: 5.00mm

Approval			IEC
Technical Data	UL	IEC	
Rated voltage	300V/600V	750V	
Rated current	15A/5A	24A	
Conductor cross-section, solid (AWG/mm <sup>2</sup> )	28-12	0.5-2.5	
Conductor cross-section, flexible (AWG/mm <sup>2</sup> )	28-12	0.5-2.5	
Rated impulse voltage	8KV		
Wire strip length	6-7mm		

Approval			IEC
Technical Data	UL	IEC	
Rated voltage	300V/600V	750V	
Rated current	15A/5A	24A	
Conductor cross-section, solid (AWG/mm <sup>2</sup> )	28-12	0.5-2.5	
Conductor cross-section, flexible (AWG/mm <sup>2</sup> )	28-12	0.5-2.5	
Rated impulse voltage	8KV		
Wire strip length	6-7mm		

Approval		IEC
Technical Data	UL	IEC
Rated voltage	300V	320V
Rated current	10A	17.5A
Conductor cross-section, solid (AWG/mm <sup>2</sup> )	24-16	0.2-1.5
Conductor cross-section, flexible (AWG/mm <sup>2</sup> )	24-16	0.2-1.5
Rated impulse voltage	4KV	
Wire strip length	9-10mm	

Single Pole	Cat.No.
	WKV100A-01X(WKV116A-01X)
End Cover	WKV500AC
Optional color	Cat.No.
	WKV100A-01X(WKV116A-01X)
	WKV100A-01X-GN(WKV116A-01X-GN)
	WKV100A-01X-RD(WKV116A-01X-RD)
	WKV100A-01X-BL(WKV116A-01X-BL)
	WKV100A-01X-BK(WKV116A-01X-BK)
	WKV100A-01X-OR(WKV116A-01X-OR)

Single Pole	Cat.No.
	WKR100A-01X(WKR116A-01X)
End Cover	WKR500AC
Optional color	Cat.No.
	WKR100A-01X(WKR116A-01X)
	WKR100A-01X-GN(WKR116A-01X-GN)
	WKR100A-01X-RD(WKR116A-01X-RD)
	WKR100A-01X-BL(WKR116A-01X-BL)
	WKR100A-01X-BK(WKR116A-01X-BK)
	WKR100A-01X-OR(WKR116A-01X-OR)

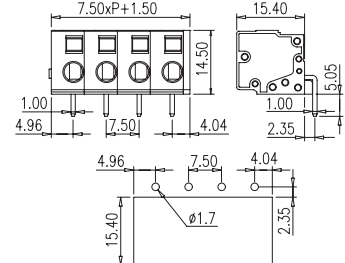
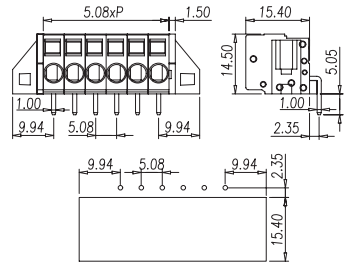
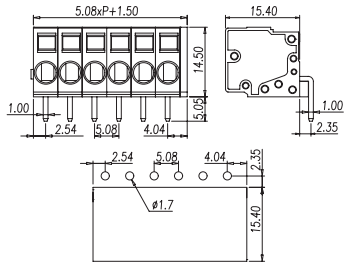
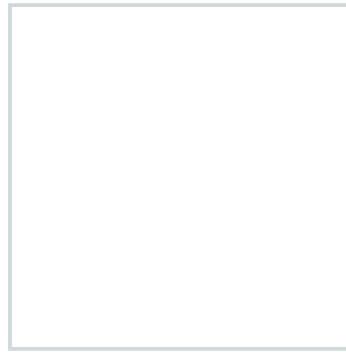
Pole	Cat.No.
02	WKV100A-02P(WKV116A-02P)
03	WKV100A-03P(WKV116A-03P)
04	WKV100A-04P(WKV116A-04P)
05	WKV100A-05P(WKV116A-05P)
06	WKV100A-06P(WKV116A-06P)
07	WKV100A-07P(WKV116A-07P)
08	WKV100A-08P(WKV116A-08P)
09	WKV100A-09P(WKV116A-09P)
10	WKV100A-10P(WKV116A-10P)
11	WKV100A-11P(WKV116A-11P)
12	WKV100A-12P(WKV116A-12P)
:	:
:	:

Pole	Cat.No.
02	WKR100A-02P(WKR116A-02P)
03	WKR100A-03P(WKR116A-03P)
04	WKR100A-04P(WKR116A-04P)
05	WKR100A-05P(WKR116A-05P)
06	WKR100A-06P(WKR116A-06P)
07	WKR100A-07P(WKR116A-07P)
08	WKR100A-08P(WKR116A-08P)
09	WKR100A-09P(WKR116A-09P)
10	WKR100A-10P(WKR116A-10P)
11	WKR100A-11P(WKR116A-11P)
12	WKR100A-12P(WKR116A-12P)
:	:
:	:

Pole	Cat.No.
02	WKA50B-02P
03	WKA50B-03P
:	:

Optional color	Cat.No.
	WKV100A-XXP(WKV116A-XXP)
	WKV100A-XXP-GN(WKV116A-XXP-GN)
	WKV100A-XXP-RD(WKV116A-XXP-RD)
	WKV100A-XXP-BL(WKV116A-XXP-BL)
	WKV100A-XXP-BK(WKV116A-XXP-BK)
	WKV100A-XXP-OR(WKV116A-XXP-OR)

Optional color	Cat.No.
	WKR100A-XXP(WKR116A-XXP)
	WKR100A-XXP-GN(WKR116A-XXP-GN)
	WKR100A-XXP-RD(WKR116A-XXP-RD)
	WKR100A-XXP-BL(WKR116A-XXP-BL)
	WKR100A-XXP-BK(WKR116A-XXP-BK)
	WKR100A-XXP-OR(WKR116A-XXP-OR)



Pitch:5.08mm

Pitch:5.08mm

Pitch:7.50mm

Approval	UL IEC	
Technical Data	UL	IEC
Rated voltage	300V	450V
Rated current	14A	12A
Conductor cross-section, solid (AWG/mm <sup>2</sup> )	28~14	0.5~1.5
Conductor cross-section, flexible (AWG/mm <sup>2</sup> )		0.5~1.5
Rated impulse voltage	4KV	
Wire strip length	8~9mm	

Approval	UL IEC	
Technical Data	UL	IEC
Rated voltage	300V	450V
Rated current	14A	12A
Conductor cross-section, solid (AWG/mm <sup>2</sup> )	28~14	0.5~1.5
Conductor cross-section, flexible (AWG/mm <sup>2</sup> )		0.5~1.5
Rated impulse voltage	4KV	
Wire strip length	8~9mm	

Approval	UL IEC	
Technical Data	UL	IEC
Rated voltage	300V	450V
Rated current	14A	12A
Conductor cross-section, solid (AWG/mm <sup>2</sup> )	28~14	0.5~1.5
Conductor cross-section, flexible (AWG/mm <sup>2</sup> )	28~14	0.5~1.5
Rated impulse voltage	6KV	
Wire strip length	8~9mm	

Approval	UL IEC	
Technical Data	UL	IEC
Rated voltage	300V	450V
Rated current	14A	12A
Conductor cross-section, solid (AWG/mm <sup>2</sup> )	28~14	0.5~1.5
Conductor cross-section, flexible (AWG/mm <sup>2</sup> )	28~14	0.5~1.5
Rated impulse voltage	6KV	
Wire strip length	8~9mm	

Pole	Cat.No.
02	SC508R-02P
03	SC508R-03P
04	SC508R-04P
05	SC508R-05P
06	SC508R-06P
07	SC508R-07P
08	SC508R-08P
09	SC508R-09P
10	SC508R-10P
11	SC508R-11P
12	SC508R-12P
:	:
:	:

Pole	Cat.No.
02	SC508RM-02P
03	SC508RM-03P
04	SC508RM-04P
05	SC508RM-05P
06	SC508RM-06P
07	SC508RM-07P
08	SC508RM-08P
09	SC508RM-09P
10	SC508RM-10P
11	SC508RM-11P
12	SC508RM-12P
:	:
:	:

Pole	Cat.No.
02	SC750R-02P
03	SC750R-03P
04	SC750R-04P
05	SC750R-05P
06	SC750R-06P
07	SC750R-07P
08	SC750R-08P
09	SC750R-09P
10	SC750R-10P
11	SC750R-11P
12	SC750R-12P
:	:
:	:

Pole	Cat.No.
02	SC750R-02P
03	SC750R-03P
04	SC750R-04P
05	SC750R-05P
06	SC750R-06P
07	SC750R-07P
08	SC750R-08P
09	SC750R-09P
10	SC750R-10P
11	SC750R-11P
12	SC750R-12P
:	:
:	:





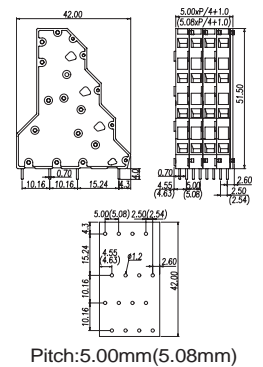
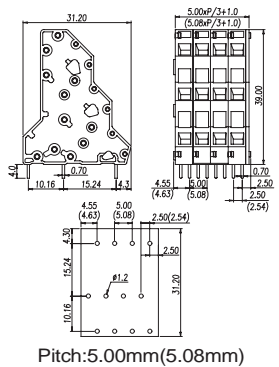
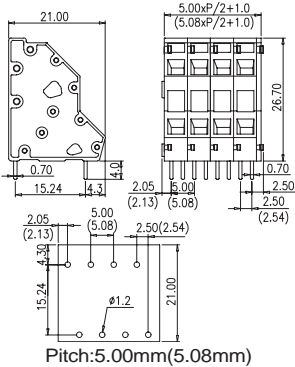
**WKK500(WKK508)**



**W3K500(W3K508)**



**W4K500(W4K508)**



Approval		
Technical Data	UL	IEC
Rated voltage	300V	450V
Rated current	10A	24A
Conductor cross-section, solid (AWG/mm <sup>2</sup> )	28-12	0.5-2.5
Conductor cross-section, flexible (AWG/mm <sup>2</sup> )	28-12	0.5-2.5
Rated impulse voltage	4KV	
Wire strip length	6~7mm	

Approval		
Technical Data	UL	IEC
Rated voltage	300V	450V
Rated current	10A	24A
Conductor cross-section, solid (AWG/mm <sup>2</sup> )	28-12	0.5-2.5
Conductor cross-section, flexible (AWG/mm <sup>2</sup> )	28-12	0.5-2.5
Rated impulse voltage	4KV	
Wire strip length	6~7mm	

Approval		
Technical Data	UL	IEC
Rated voltage	300V	450V
Rated current	10A	24A
Conductor cross-section, solid (AWG/mm <sup>2</sup> )	28-12	0.5-2.5
Conductor cross-section, flexible (AWG/mm <sup>2</sup> )	28-12	0.5-2.5
Rated impulse voltage	4KV	
Wire strip length	6~7mm	

Approval		
Technical Data	UL	IEC
Rated voltage	300V	450V
Rated current	10A	24A
Conductor cross-section, solid (AWG/mm <sup>2</sup> )	28-12	0.5-2.5
Conductor cross-section, flexible (AWG/mm <sup>2</sup> )	28-12	0.5-2.5
Rated impulse voltage	4KV	
Wire strip length	6~7mm	

Single Pole	Cat.No.
	WKK500-02X(WKK508-02X)
End Cover	WKK500C
Optional color	Cat.No.
	WKK500-02X(WKK508-02X)
	WKK500-02X-GN(WKK508-02X-GN)
	WKK500-02X-RD(WKK508-02X-RD)
	WKK500-02X-BL(WKK508-02X-BL)
	WKK500-02X-BK(WKK508-02X-BK)
	WKK500-02X-OR(WKK508-02X-OR)

Single Pole	Cat.No.
	W3K500-03X(W3K508-03X)
End Cover	W3K500C
Optional color	Cat.No.
	W3K500-03X(W3K508-03X)
	W3K500-03X-GN(W3K508-03X-GN)
	W3K500-03X-RD(W3K508-03X-RD)
	W3K500-03X-BL(W3K508-03X-BL)
	W3K500-03X-BK(W3K508-03X-BK)
	W3K500-03X-OR(W3K508-03X-OR)

Single Pole	Cat.No.
	W4K500-04X(W4K508-04X)
End Cover	W4K500C
Optional color	Cat.No.
	W4K500-04X(W4K508-04X)
	W4K500-04X-GN(W4K508-04X-GN)
	W4K500-04X-RD(W4K508-04X-RD)
	W4K500-04X-BL(W4K508-04X-BL)
	W4K500-04X-BK(W4K508-04X-BK)
	W4K500-04X-OR(W4K508-04X-OR)

Single Pole	Cat.No.
	W4K500-04X(W4K508-04X)
End Cover	W4K500C
Optional color	Cat.No.
	W4K500-04X(W4K508-04X)
	W4K500-04X-GN(W4K508-04X-GN)
	W4K500-04X-RD(W4K508-04X-RD)
	W4K500-04X-BL(W4K508-04X-BL)
	W4K500-04X-BK(W4K508-04X-BK)
	W4K500-04X-OR(W4K508-04X-OR)

Pole	Cat.No.
04	WKK500-04P(WKK508-04P)
06	WKK500-06P(WKK508-06P)
08	WKK500-08P(WKK508-08P)
10	WKK500-10P(WKK508-10P)
12	WKK500-12P(WKK508-12P)
14	WKK500-14P(WKK508-14P)
16	WKK500-16P(WKK508-16P)
18	WKK500-18P(WKK508-18P)
20	WKK500-20P(WKK508-20P)
22	WKK500-22P(WKK508-22P)
24	WKK500-24P(WKK508-24P)
:	:
:	:
:	:

Pole	Cat.No.
06	W3K500-06P(W3K508-06P)
09	W3K500-09P(W3K508-09P)
12	W3K500-12P(W3K508-12P)
15	W3K500-15P(W3K508-15P)
18	W3K500-18P(W3K508-18P)
21	W3K500-21P(W3K508-21P)
24	W3K500-24P(W3K508-24P)
27	W3K500-27P(W3K508-27P)
30	W3K500-30P(W3K508-30P)
33	W3K500-33P(W3K508-33P)
36	W3K500-36P(W3K508-36P)
:	:
:	:
:	:

Pole	Cat.No.
08	W4K500-08P(W4K508-08P)
12	W4K500-12P(W4K508-12P)
16	W4K500-16P(W4K508-16P)
20	W4K500-20P(W4K508-20P)
24	W4K500-24P(W4K508-24P)
28	W4K500-28P(W4K508-28P)
32	W4K500-32P(W4K508-32P)
36	W4K500-36P(W4K508-36P)
40	W4K500-40P(W4K508-40P)
44	W4K500-44P(W4K508-44P)
48	W4K500-48P(W4K508-48P)
:	:
:	:
:	:

Pole	Cat.No.
08	W4K500-08P(W4K508-08P)
12	W4K500-12P(W4K508-12P)
16	W4K500-16P(W4K508-16P)
20	W4K500-20P(W4K508-20P)
24	W4K500-24P(W4K508-24P)
28	W4K500-28P(W4K508-28P)
32	W4K500-32P(W4K508-32P)
36	W4K500-36P(W4K508-36P)
40	W4K500-40P(W4K508-40P)
44	W4K500-44P(W4K508-44P)
48	W4K500-48P(W4K508-48P)
:	:
:	:
:	:

Optional color	Cat.No.
	WKK500-XXP(WKK508-XXP)
	WKK500-XXP-GN(WKK508-XXP-GN)
	WKK500-XXP-RD(WKK508-XXP-RD)
	WKK500-XXP-BL(WKK508-XXP-BL)
	WKK500-XXP-BK(WKK508-XXP-BK)
	WKK500-XXP-OR(WKK508-XXP-OR)

Optional color	Cat.No.
	W3K500-XXP(W3K508-XXP)
	W3K500-XXP-GN(W3K508-XXP-GN)
	W3K500-XXP-RD(W3K508-XXP-RD)
	W3K500-XXP-BL(W3K508-XXP-BL)
	W3K500-XXP-BK(W3K508-XXP-BK)
	W3K500-XXP-OR(W3K508-XXP-OR)

Optional color	Cat.No.
	W4K500-XXP(W3K508-XXP)
	W4K500-XXP-GN(W4K508-XXP-GN)
	W4K500-XXP-RD(W4K508-XXP-RD)
	W4K500-XXP-BL(W4K508-XXP-BL)
	W4K500-XXP-BK(W4K508-XXP-BK)
	W4K500-XXP-OR(W4K508-XXP-OR)

Optional color	Cat.No.
	W4K500-XXP(W3K508-XXP)
	W4K500-XXP-GN(W4K508-XXP-GN)
	W4K500-XXP-RD(W4K508-XXP-RD)
	W4K500-XXP-BL(W4K508-XXP-BL)
	W4K500-XXP-BK(W4K508-XXP-BK)
	W4K500-XXP-OR(W4K508-XXP-OR)





# Memo

Lined area for writing.

## Terminal Block