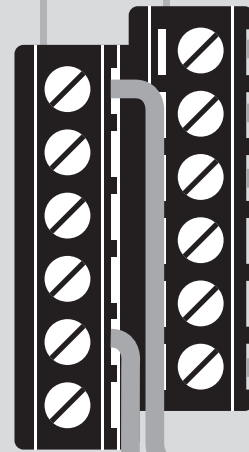


PCB

European P.C.B. type terminal blocks

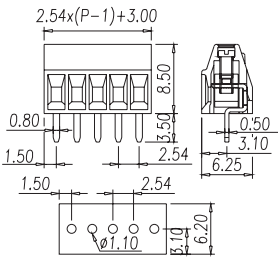


European P.C.B. type terminal blocks

EK series are PCB type terminal blocks, which are designed with 3.50mm, 3.81mm, 5.00mm, 5.08mm, 6.35mm, 7.50mm, 9.50mm, 10.00mm, and 10.16mm pitches at 90°, 135° and 180° wire entry directions for options. With the design of single level, bi-level, and tri-level structures, the series make the various options for application. It is fitted for the wire size from 28AWG to 6AWG. Especially the ESK series provide the design with high electrical capacity in the small space. The product is extremely suitable for power supply, inverter... etc. EK series take steel yoke as the fixture for wire connection, which enables the product to be maintenance-free, anti-vibration, preventing from losing, large contact area, high reliability. All of the series products are conformed of IEC60947-7-4 and UL1059 international standard and acquired the approvals of UL and VDE. Most of EK series provide the standard basic sizes as 2 poles and 3 poles. With these two sizes, it can be combined for any needed pole number. However, it depends on the actual situation, for mass quantity, we can supply the one-piece housing product. At the same time, we can also provide the service of printing and marking on the terminal blocks. EK series apply the high reliability structure of wire connections and professional production model. This enable the quality to be stable. The series are extremely suitable for industrial control and information technology.



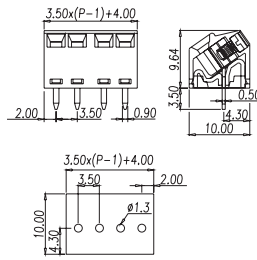
EK254V



Pitch:2.54mm



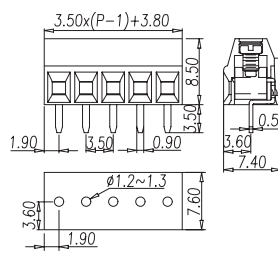
EK350A



Pitch:3.50mm



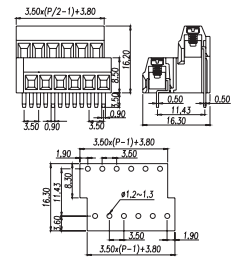
EK350V



Pitch:3.50mm



EK350V4L



Pitch:3.50mm

Approval	UL IEC	
Technical Data	UL	IEC
Rated voltage	150V	130V
Rated current	10A	8A
Conductor cross-section, solid (AWG/mm ²)	28-16	0.5-1.5
Conductor cross-section, flexible (AWG/mm ²)	28-16	0.5-1.5
Rated impulse voltage	2.5KV	
Torque(N-m)	0.17	
Screw	M1.6	
Wire strip length	4-5mm	
Pole	Cat.No.	
02	EK254V-02P	
:	:	
:	:	
16	EK254V-16P	

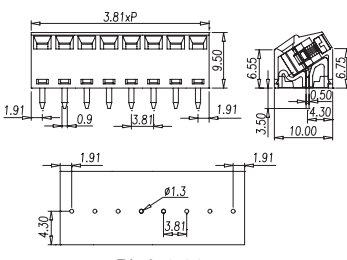
Approval	UL IEC	
Technical Data	UL	IEC
Rated voltage	300V	130V
Rated current	10A	12A
Conductor cross-section, solid (AWG/mm ²)	30-16	0.14-1.5
Conductor cross-section, flexible (AWG/mm ²)	30-16	0.14-1.5
Rated impulse voltage	2.5KV	
Torque(N-m)	0.20	
Screw	M2	
Wire strip length	6-7mm	
Pole	Cat.No.	
02	EK350A-02P	
:	:	
:	:	
24	EK350A-24P	

Approval	UL IEC	
Technical Data	UL	IEC
Rated voltage	300V	130V
Rated current	10A	12A
Conductor cross-section, solid (AWG/mm ²)	30-16	0.14-1.5
Conductor cross-section, flexible (AWG/mm ²)	30-16	0.14-1.5
Rated impulse voltage	2.5KV	
Torque(N-m)	0.20	
Screw	M2	
Wire strip length	6-7mm	
Pole	Cat.No.	
02	EK350V-02P	
:	:	
:	:	
24	EK350V-24P	

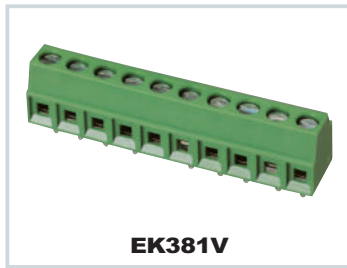
Approval	UL IEC	
Technical Data	UL	IEC
Rated voltage	300V	130V
Rated current	10A	10A
Conductor cross-section, solid (AWG/mm ²)	30-16	0.5-1.5
Conductor cross-section, flexible (AWG/mm ²)	30-16	0.5-1.5
Rated impulse voltage	2.5KV	
Torque(N-m)	0.15	
Screw	M2	
Wire strip length	6-7mm	
Pole	Cat.No.	
2X2	EK350V4L-04P	
:	:	
:	:	
20X2	EK350V4L-40P	



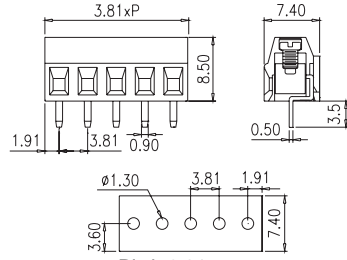
EK381A



Pitch:3.81mm



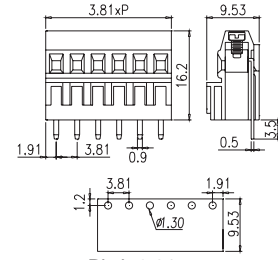
EK381V



Pitch:3.81mm



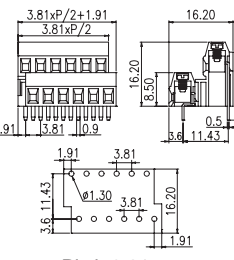
EEK381V



Pitch:3.81mm



EK381V4L



Pitch:3.81mm

Approval	UL IEC	
Technical Data	UL	IEC
Rated voltage	300V	250V
Rated current	12A	12A
Conductor cross-section, solid (AWG/mm ²)	30-16	0.5-1.5
Conductor cross-section, flexible (AWG/mm ²)	30-16	0.5-1.5
Rated impulse voltage	2.5KV	
Torque(N-m)	0.20	
Screw	M2	
Wire strip length	6-7mm	
Pole	Cat.No.	
02	EK381A-02P	
:	:	
:	:	
24	EK381A-24P	

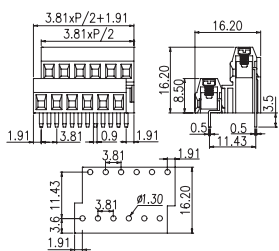
Approval	UL IEC	
Technical Data	UL	IEC
Rated voltage	300V	250V
Rated current	12A	12A
Conductor cross-section, solid (AWG/mm ²)	30-16	0.5-1.5
Conductor cross-section, flexible (AWG/mm ²)	30-16	0.5-1.5
Rated impulse voltage	2.5KV	
Torque(N-m)	0.20	
Screw	M2	
Wire strip length	6-7mm	
Pole	Cat.No.	
02	EK381V-02P	
:	:	
:	:	
24	EK381V-24P	

Approval	UL IEC	
Technical Data	UL	IEC
Rated voltage	300V	250V
Rated current	12A	12A
Conductor cross-section, solid (AWG/mm ²)	30-16	0.5-1.5
Conductor cross-section, flexible (AWG/mm ²)	30-16	0.5-1.5
Rated impulse voltage	2.5KV	
Torque(N-m)	0.20	
Screw	M2	
Wire strip length	6-7mm	
Pole	Cat.No.	
02	EEK381V-02P	
:	:	
:	:	
36	EEK381V-36P	

Approval	UL IEC	
Technical Data	UL	IEC
Rated voltage	300V	250V
Rated current	12A	12A
Conductor cross-section, solid (AWG/mm ²)	30-16	0.5-1.5
Conductor cross-section, flexible (AWG/mm ²)	30-16	0.5-1.5
Rated impulse voltage	2.5KV	
Torque(N-m)	0.20	
Screw	M2	
Wire strip length	6-7mm	
Pole	Cat.No.	
2X2	EK381V4L-04P	
:	:	
:	:	
24X2	EK381V4L-48P	



EK381V4R

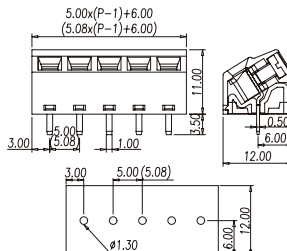


Pitch:3.81mm

Approval		
Technical Data	UL	IEC
Rated voltage	300V	250V
Rated current	12A	12A
Conductor cross-section, solid (AWG/mm ²)	30~16	0.5~1.5
Conductor cross-section, flexible (AWG/mm ²)	30~16	0.5~1.5
Rated impulse voltage	2.5KV	
Torque(N-m)	0.20	
Screw	M2	
Wire strip length	6~7mm	
Pole	Cat.No.	
2X2	EK381V4R-04P	
:	:	
:	:	
24X2	EK381V4R-48P	



ELK500A(ELK508A)

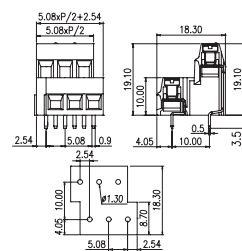


Pitch:5.00mm(5.08mm)

Approval		
Technical Data	UL	IEC
Rated voltage	300V	250V
Rated current	13.5A	17.5A
Conductor cross-section, solid (AWG/mm ²)	30~16	0.14~1.5
Conductor cross-section, flexible (AWG/mm ²)	30~16	0.14~1.5
Rated impulse voltage	4KV	
Torque(N-m)	0.50	
Screw	M2.5	
Wire strip length	5~6mm	
Pole	Cat.No.	
02	ELK500A-02P(ELK508A-02P)	
:	:	
16	ELK500A-16P	
24	(ELK508A-24P)	

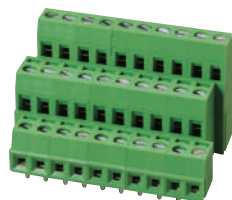


EELK508V..P

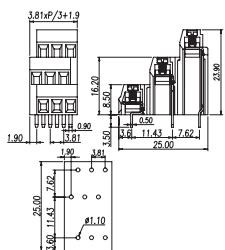


Pitch:5.08mm

Approval		
Technical Data	UL	IEC
Rated voltage	300V	250V
Rated current	13.5A	14A
Conductor cross-section, solid (AWG/mm ²)	26~16	0.5~1.5
Conductor cross-section, flexible (AWG/mm ²)	26~16	0.5~1.5
Rated impulse voltage	4KV	
Torque(N-m)	0.79	
Screw	M2.5	
Wire strip length	6~7mm	
Pole	Cat.No.	
2X2	EELK508V-04P(EELK508V-04P(B))	
:	:	
:	:	
16X2	EELK508V-32P(EELK508V-32P(B))	



EK381V3L

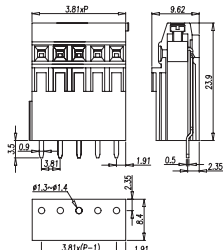


Pitch:3.81mm

Approval		
Technical Data	UL	IEC
Rated voltage	300V	250V
Rated current	12A	12A
Conductor cross-section, solid (AWG/mm ²)	30~16	0.5~1.5
Conductor cross-section, flexible (AWG/mm ²)	30~16	0.5~1.5
Rated impulse voltage	2.5KV	
Torque(N-m)	0.20	
Screw	M2	
Wire strip length	4~5mm	
Pole	Cat.No.	
2X3	EK381V3L-06P	
:	:	
:	:	
24X3	EK381V3L-72P	

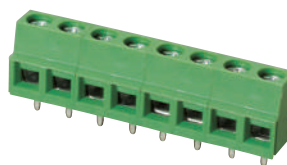


E3K381V

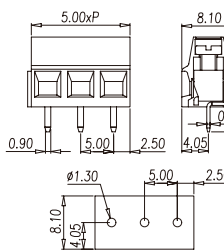


Pitch:3.81mm

Approval		
Technical Data	UL	IEC
Rated voltage	300V	250V
Rated current	12A	12A
Conductor cross-section, solid (AWG/mm ²)	30~16	0.5~1.5
Conductor cross-section, flexible (AWG/mm ²)	30~16	0.5~1.5
Rated impulse voltage	2.5KV	
Torque(N-m)	0.20	
Screw	M2	
Wire strip length	5~6mm	
Pole	Cat.No.	
02	E3K381V-02P	
:	:	
:	:	
24	E3K381V-24P	

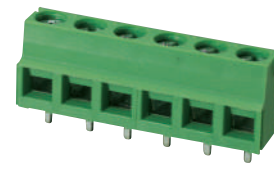


ELK500V

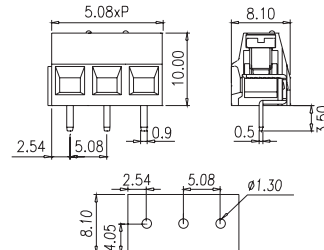


Pitch:5.00mm

Approval		
Technical Data	UL	IEC
Rated voltage	300V	250V
Rated current	13.5A	17.5A
Conductor cross-section, solid (AWG/mm ²)	30~16	0.14~1.5
Conductor cross-section, flexible (AWG/mm ²)	30~16	0.14~1.5
Rated impulse voltage	4KV	
Torque(N-m)	0.50	
Screw	M2.5	
Wire strip length	6~7mm	
Pole	Cat.No.	
02	ELK500V-02P	
:	:	
:	:	
24	ELK500V-24P	

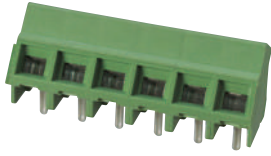


ELK508V..P

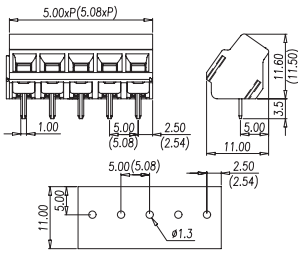


Pitch:5.08mm

Approval		
Technical Data	UL	IEC
Rated voltage	300V	250V
Rated current	13.5A	14A
Conductor cross-section, solid (AWG/mm ²)	30~16	0.5~1.5
Conductor cross-section, flexible (AWG/mm ²)	30~16	0.5~1.5
Rated impulse voltage	4KV	
Torque(N-m)	0.50	
Screw	M2.5	
Wire strip length	6~7mm	
Pole	Cat.No.	
02	ELK508V-02P(ELK508V-02P(B))	
:	:	
:	:	
17	ELK508V-17P(ELK508V-17P(B))	

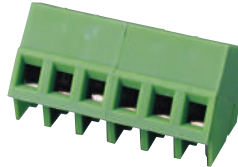


ELK500S(ELK508S)

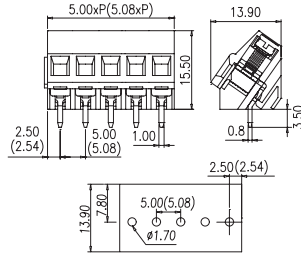


Pitch:5.00mm(5.08mm)

Approval		
Technical Data	UL	IEC
Rated voltage	300V	250V
Rated current	13.5A	17.5A
Conductor cross-section, solid (AWG/mm ²)	30-14	0.14-1.5
Conductor cross-section, flexible (AWG/mm ²)	30-14	0.14-1.5
Rated impulse voltage	4KV	
Torque(N-m)	0.40	
Screw	M2.5	
Wire strip length	6mm	
Pole	Cat.No.	
02	ELK500S-02P(ELK508S-02P)	
:	:	
24	ELK500S-24P(ELK508S-24P)	



EK500A(EK508A)

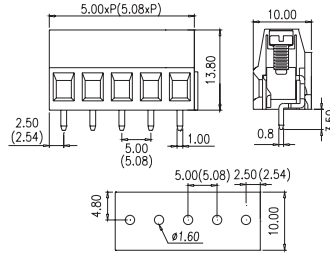


Pitch:5.00mm(5.08mm)

Approval			
Technical Data	UL	IEC	
Rated voltage	300V	250V	
Rated current	20A	24A	
Conductor cross-section, solid (AWG/mm ²)	24-12	0.14-2.5	
Conductor cross-section, flexible (AWG/mm ²)	24-12	0.14-2.5	
Rated impulse voltage	4KV		
Torque(N-m)	0.50		
Screw	M2.5		
Wire strip length	6mm		
Pole	Cat.No.		
02	EK500A-02P(EK508A-02P)		
:	:		
24	EK500A-24P(EK508A-24P)		

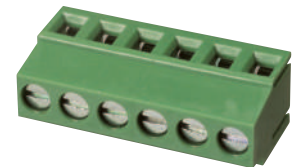


EK500V(EK508V)

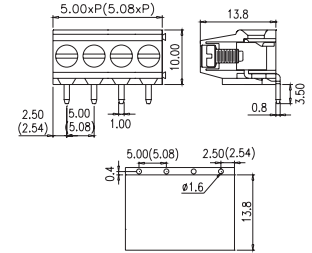


Pitch:5.00mm(5.08mm)

Approval			
Technical Data	UL	IEC	
Rated voltage	300V	250V	
Rated current	20A	24A	
Conductor cross-section, solid (AWG/mm ²)	24-12	0.14-1.5	
Conductor cross-section, flexible (AWG/mm ²)	24-12	0.14-1.5	
Rated impulse voltage	4KV		
Torque(N-m)	0.50		
Screw	M2.5		
Wire strip length	6-7mm		
Pole	Cat.No.		
02	EK500V-02P(EK508V-02P)		
:	:		
25	EK500V-25P(EK508V-25P)		

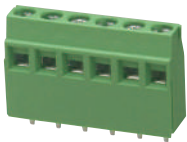


EK500R(EK508R)

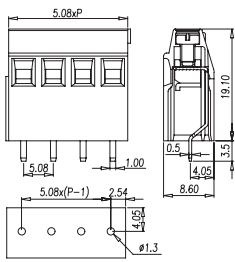


Pitch:5.00mm(5.08mm)

Approval		
Technical Data	UL	IEC
Rated voltage	300V	250V
Rated current	20A	10A
Conductor cross-section, solid (AWG/mm ²)	24-12	0.5-2.5
Conductor cross-section, flexible (AWG/mm ²)	24-12	0.5-2.5
Rated impulse voltage	4KV	
Torque(N-m)	0.50	
Screw	M2.5	
Wire strip length	6-7mm	
Pole	Cat.No.	
02	EK500R-02P(EK508R-02P)	
:	:	
25	EK500R-25P(EK508R-25P)	



E2LK508V

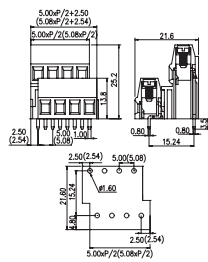


Pitch:5.08mm

Approval	
Technical Data	UL IEC
Rated voltage	300V 250V
Rated current	13.5A 14A
Conductor cross-section, solid (AWG/mm ²)	30-14 0.5-1.5
Conductor cross-section, flexible (AWG/mm ²)	30-14 0.5-1.5
Rated impulse voltage	4KV
Torque(N-m)	0.29
Screw	M2.5
Wire strip length	5-6mm
Pole	Cat.No.
02	E2LK508V-02P
:	:
24	E2LK508V-24P



EK500V4L(EK508V4L)

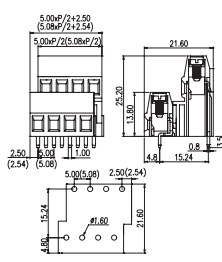


Pitch:5.00mm(5.08mm)

Approval		
Technical Data	UL	IEC
Rated voltage	300V	250V
Rated current	20A	10A
Conductor cross-section, solid (AWG/mm ²)	24-12	0.5-2.5
Conductor cross-section, flexible (AWG/mm ²)	24-12	0.5-2.5
Rated impulse voltage	4KV	
Torque(N-m)	0.50	
Screw	M2.5	
Wire strip length	6-7mm	
Pole	Cat.No.	
2X2	EK500V4L-04P(EK508V4L-04P)	
3X2	EK500V4L-06P(EK508V4L-06P)	



EK500V4R(EK508V4R)

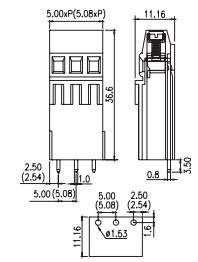


Pitch:5.00mm(5.08mm)

Approval		
Technical Data	UL	IEC
Rated voltage	300V	250V
Rated current	20A	10A
Conductor cross-section, solid (AWG/mm ²)	24-12	0.5-2.5
Conductor cross-section, flexible (AWG/mm ²)	24-12	0.5-2.5
Rated impulse voltage	4KV	
Torque(N-m)	0.50	
Screw	M2.5	
Wire strip length	6-7mm	
Pole	Cat.No.	
2X2	EK500V4R-04P(EK508V4R-04P)	
3X2	EK500V4R-06P(EK508V4R-06P)	



E3K500V(E3K508V)

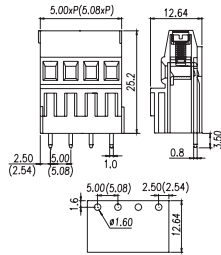


Pitch:5.00mm(5.08mm)

Approval		
Technical Data	UL	IEC
Rated voltage	300V	250V
Rated current	20A	10A
Conductor cross-section, solid (AWG/mm ²)	24-12	0.5-2.5
Conductor cross-section, flexible (AWG/mm ²)	24-12	0.5-2.5
Rated impulse voltage	4KV	
Torque(N-m)	0.50	
Screw	M2.5	
Wire strip length	6-7mm	
Pole	Cat.No.	
02	E3K500V-02P(E3K508V-02P)	
03	E3K500V-03P(E3K508V-03P)	



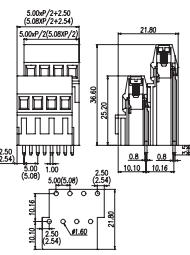
EEK500V(EEK508V)



Pitch:5.00mm(5.08mm)



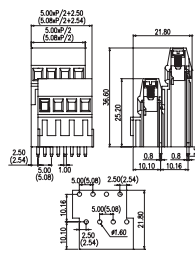
EK500V2L(EK508V2L)



Pitch:5.00mm(5.08mm)



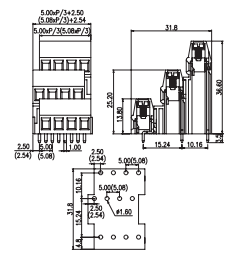
EK500V2R(EK508V2R)



Pitch:5.00mm(5.08mm)



EK500V3L(EK508V3L)



Pitch:5.00mm(5.08mm)

Approval		
Technical Data	UL	IEC
Rated voltage	300V	250V
Rated current	20A	12A
Conductor cross-section, solid (AWG/mm ²)	24~12	0.5~2.5
Conductor cross-section, flexible (AWG/mm ²)	24~12	0.5~2.5
Rated impulse voltage	4KV	
Torque(N-m)	0.50	
Screw	M2.5	
Wire strip length	6~7mm	
Pole	Cat.No.	
02	EEK500V-02P(EEK508V-02P)	
03	EEK500V-03P(EEK508V-03P)	
:	:	
:	:	

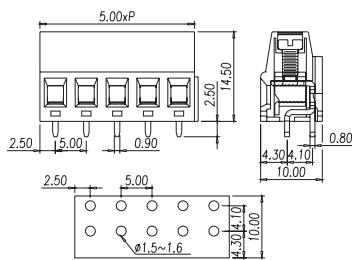
Approval		
Technical Data	UL	IEC
Rated voltage	300V	250V
Rated current	20A	10A
Conductor cross-section, solid (AWG/mm ²)	24~12	0.5~2.5
Conductor cross-section, flexible (AWG/mm ²)	24~12	0.5~2.5
Rated impulse voltage	4KV	
Torque(N-m)	0.50	
Screw	M2.5	
Wire strip length	6~7mm	
Pole	Cat.No.	
2X2	EK500V2L-04P(EK508V2L-04P)	
3X2	EK500V2L-06P(EK508V2L-06P)	
:	:	
:	:	

Approval		
Technical Data	UL	IEC
Rated voltage	300V	250V
Rated current	20A	10A
Conductor cross-section, solid (AWG/mm ²)	24~12	0.5~2.5
Conductor cross-section, flexible (AWG/mm ²)	24~12	0.5~2.5
Rated impulse voltage	4KV	
Torque(N-m)	0.50	
Screw	M2.5	
Wire strip length	6~7mm	
Pole	Cat.No.	
2X2	EK500V2R-04P(EK508V2R-04P)	
3X2	EK500V2R-06P(EK508V2R-06P)	
:	:	
:	:	

Approval		
Technical Data	UL	IEC
Rated voltage	300V	250V
Rated current	20A	10A
Conductor cross-section, solid (AWG/mm ²)	24~12	0.5~2.5
Conductor cross-section, flexible (AWG/mm ²)	24~12	0.5~2.5
Rated impulse voltage	4KV	
Torque(N-m)	0.50	
Screw	M2.5	
Wire strip length	6~7mm	
Pole	Cat.No.	
2X3	EK500V3L-06P(EK508V3L-06P)	
3X3	EK500V3L-09P(EK508V3L-09P)	
:	:	
:	:	



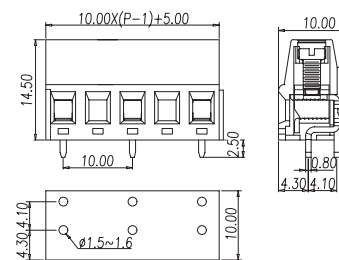
EK500BD



Pitch:5.00mm



EK500BD--P5



Pitch:10.00mm

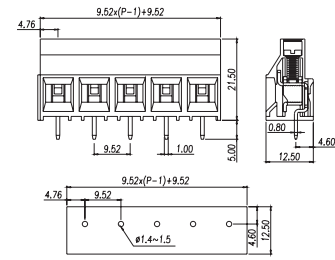
Approval		
Technical Data	UL	IEC
Rated voltage	300V	250V
Rated current	20A	12A
Conductor cross-section, solid (AWG/mm ²)	24~12	0.5~2.5
Conductor cross-section, flexible (AWG/mm ²)	24~12	0.5~2.5
Rated impulse voltage	4KV	
Torque(N-m)	0.50	
Screw	M2.5	
Wire strip length	6~7mm	
Pole	Cat.No.	
02	EK500BD-02P	
:	:	
:	:	
16	EK500BD-16P	

Approval		
Technical Data	UL	IEC
Rated voltage	300V	250V
Rated current	20A	12A
Conductor cross-section, solid (AWG/mm ²)	24~12	0.5~2.5
Conductor cross-section, flexible (AWG/mm ²)	24~12	0.5~2.5
Rated impulse voltage	8KV	
Torque(N-m)	0.57	
Screw	M2.5	
Wire strip length	6~7mm	
Pole	Cat.No.	
02	EK500BD-02P5	
:	:	
:	:	
08	EK500BD-08P5	

Approval		
Technical Data	UL	IEC
Rated voltage	300V	250V
Rated current	20A	12A
Conductor cross-section, solid (AWG/mm ²)	24~12	0.5~2.5
Conductor cross-section, flexible (AWG/mm ²)	24~12	0.5~2.5
Rated impulse voltage	8KV	
Torque(N-m)	0.57	
Screw	M2.5	
Wire strip length	6~7mm	
Pole	Cat.No.	
02	EK500BD-02P5	
:	:	
:	:	
08	EK500BD-08P5	



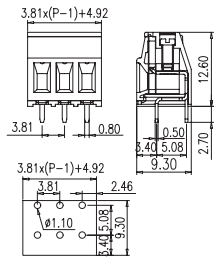
EK950V



Pitch: 9.52mm



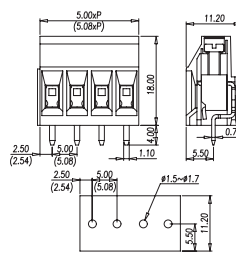
EHK381V



Pitch: 3.81mm



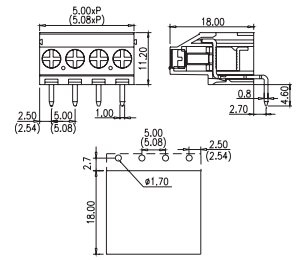
EHK5V(EHK2V)



Pitch: 5.00mm(5.08mm)



EHK500R(EHK508R)



Pitch: 5.00mm(5.08mm)

Approval		
Technical Data	UL	IEC
Rated voltage	300V / 600V	1000V
Rated current	30A / 5A	32A
Conductor cross-section, solid (AWG/mm ²)	26-10	0.5-4.0
Conductor cross-section, flexible (AWG/mm ²)	26-10	0.5-4.0
Rated impulse voltage		8KV
Torque(N-m)	0.50	
Screw	M3	
Wire strip length	6-7mm	
Pole	Cat.No.	
02	EK950V-02P	
03	EK950V-03P	
:	:	
:	:	

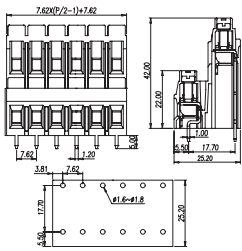
Approval		
Technical Data	UL	IEC
Rated voltage	300V	130V
Rated current	10A	8A
Conductor cross-section, solid (AWG/mm ²)	26-16	0.5-1.5
Conductor cross-section, flexible (AWG/mm ²)	26-16	0.5-1.5
Rated impulse voltage		4KV
Torque(N-m)	0.21	
Screw	M2	
Wire strip length		
Pole	Cat.No.	
02	EHK381V-02P	
:	:	
:	:	
16	EHK381V-16P	

Approval		
Technical Data	UL	IEC
Rated voltage	300V	450V
Rated current	25A	24A
Conductor cross-section, solid (AWG/mm ²)	24-12	0.5-2.5
Conductor cross-section, flexible (AWG/mm ²)	24-12	0.5-2.5
Rated impulse voltage		4KV
Torque(N-m)	0.45	
Screw	M2.5	
Wire strip length	6-7mm	
Pole	Cat.No.	
02	EHK5V-02P(EHK2V-02P)	
03	EHK5V-03P(EHK2V-03P)	
:	:	
:	:	

Approval		
Technical Data	UL	IEC
Rated voltage	300V	250V
Rated current	25A	24A
Conductor cross-section, solid (AWG/mm ²)	24-12	0.5-2.5
Conductor cross-section, flexible (AWG/mm ²)	24-12	0.5-2.5
Rated impulse voltage		4KV
Torque(N-m)	0.45	
Screw	M2.5	
Wire strip length	6-7mm	
Pole	Cat.No.	
02	EHK500R-02P(EHK508R-02P)	
03	EHK500R-03P(EHK508R-03P)	
:	:	
:	:	



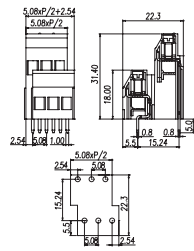
EKB762V



Pitch: 7.62mm



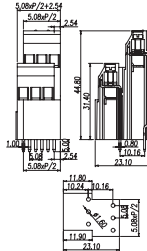
EEHK508V



Pitch: 5.08mm



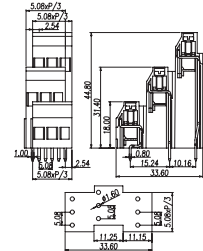
EHK508V2L



Pitch: 5.08mm



EHK508V3L



Pitch: 5.08mm

Approval		
Technical Data	UL	IEC
Rated voltage	300V / 600V	750V
Rated current	30A / 5A	32A
Conductor cross-section, solid (AWG/mm ²)	24-10	0.5-4.0
Conductor cross-section, flexible (AWG/mm ²)	24-10	0.5-4.0
Rated impulse voltage		6KV
Torque(N-m)	1.37	
Screw	M3.5	
Wire strip length	10-11mm	
Pole	Cat.No.	
2X2	EKB762V-04P	
3X2	EKB762V-06P	
:	:	
:	:	

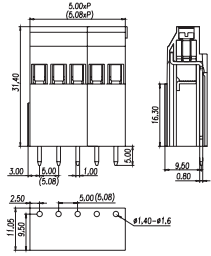
Approval		
Technical Data	UL	IEC
Rated voltage	300V	250V
Rated current	25A	24A
Conductor cross-section, solid (AWG/mm ²)	24-12	0.5-2.5
Conductor cross-section, flexible (AWG/mm ²)	24-12	0.5-2.5
Rated impulse voltage		4KV
Torque(N-m)	0.45	
Screw	M2.5	
Wire strip length	6-7mm	
Pole	Cat.No.	
2X2	EEHK508V-04P	
3X2	EEHK508V-06P	
:	:	
:	:	

Approval		
Technical Data	UL	IEC
Rated voltage	300V	250V
Rated current	20A	24A
Conductor cross-section, solid (AWG/mm ²)	24-12	0.5-2.5
Conductor cross-section, flexible (AWG/mm ²)	24-12	0.5-2.5
Rated impulse voltage		4KV
Torque(N-m)	0.45	
Screw	M2.5	
Wire strip length	6-7mm	
Pole	Cat.No.	
2X2	EHK508V2L-04P	
3X2	EHK508V2L-06P	
:	:	
:	:	

Approval		
Technical Data	UL	IEC
Rated voltage	300V	250V
Rated current	20A	24A
Conductor cross-section, solid (AWG/mm ²)	24-12	0.5-2.5
Conductor cross-section, flexible (AWG/mm ²)	24-12	0.5-2.5
Rated impulse voltage		4KV
Torque(N-m)	0.45	
Screw	M2.5	
Wire strip length	6-7mm	
Pole	Cat.No.	
2X2	EHK508V3L-06P	
3X3	EHK508V3L-09P	
:	:	
:	:	



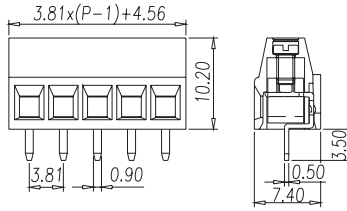
E2HK500V(E2HK508V)-..PAM



Pitch:5.00mm(5.08mm)



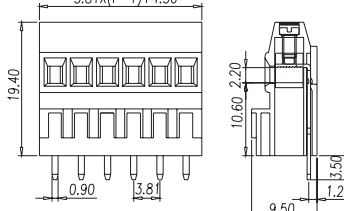
ESK381V



Pitch:3.81mm



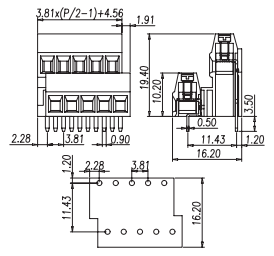
EESK381V



Pitch:3.81mm



ESK381V4L



Pitch:3.81mm

Approval		
Technical Data	UL	IEC
Rated voltage	300V	250V
Rated current	20A	24A
Conductor cross-section, solid (AWG/mm ²)	24~12	0.5~2.5
Conductor cross-section, flexible (AWG/mm ²)	24~12	0.5~2.5
Rated impulse voltage	4KV	
Torque(N-m)	0.45	
Screw	M2.5	
Wire strip length	6~7mm	
Pole	Cat.No.	
02	E2HK500V-02P(E2HK508V-02P)	
03	E2HK500V-03P(E2HK508V-03P)	
04	E2HK500V-04PAM(E2HK508V-04PAM)	
:	:	
:	:	

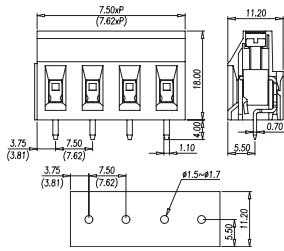
Approval		
Technical Data	UL	IEC
Rated voltage	300V	250V
Rated current	12A	12A
Conductor cross-section, solid (AWG/mm ²)	30~14	0.5~1.5
Conductor cross-section, flexible (AWG/mm ²)	30~14	0.5~1.5
Rated impulse voltage	2.5KV	
Torque(N-m)	0.20	
Screw	M2	
Wire strip length	6~7mm	
Pole	Cat.No.	
02	ESK381V-02P	
:	:	
:	:	
24	ESK381V-24P	

Approval		
Technical Data	UL	IEC
Rated voltage	300V	250V
Rated current	12A	12A
Conductor cross-section, solid (AWG/mm ²)	30~14	0.5~1.5
Conductor cross-section, flexible (AWG/mm ²)	30~14	0.5~1.5
Rated impulse voltage	2.5KV	
Torque(N-m)	0.20	
Screw	M2	
Wire strip length	6~7mm	
Pole	Cat.No.	
02	EESK381V-02P	
:	:	
:	:	
24	EESK381V-24P	

Approval		
Technical Data	UL	IEC
Rated voltage	300V	250V
Rated current	12A	12A
Conductor cross-section, solid (AWG/mm ²)	30~14	0.5~1.5
Conductor cross-section, flexible (AWG/mm ²)	30~14	0.5~1.5
Rated impulse voltage	2.5KV	
Torque(N-m)	0.20	
Screw	M2	
Wire strip length	6~7mm	
Pole	Cat.No.	
2X2	ESK381V4L-04P	
:	:	
:	:	
24X2	ESK381V4L-48P	



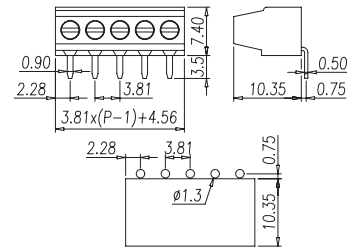
EHK7V(EHK3V)



Pitch:7.50mm(7.62mm)



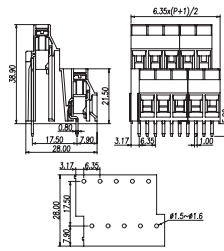
ESK381R



Pitch:3.81mm



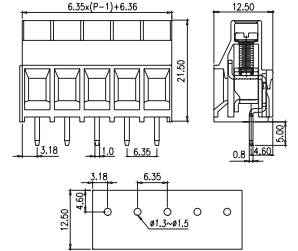
EKB635V



Pitch:6.35mm



ESK635V



Pitch:6.35mm

Approval		
Technical Data	UL	IEC
Rated voltage	300V	750V
Rated current	25A	24A
Conductor cross-section, solid (AWG/mm ²)	24~12	0.5~2.5
Conductor cross-section, flexible (AWG/mm ²)	24~12	0.5~2.5
Rated impulse voltage	6KV	
Torque(N-m)	0.45	
Screw	M2.5	
Wire strip length	6~7mm	
Pole	Cat.No.	
02	EHK7V-02P(EHK3V-02P)	
03	EHK7V-03P(EHK3V-03P)	
:	:	
:	:	

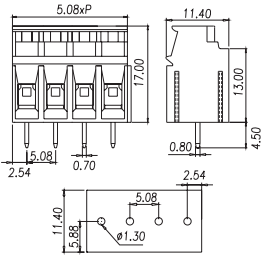
Approval		
Technical Data	UL	IEC
Rated voltage	300V	250V
Rated current	12A	12A
Conductor cross-section, solid (AWG/mm ²)	30~14	0.5~1.5
Conductor cross-section, flexible (AWG/mm ²)	30~14	0.5~1.5
Rated impulse voltage	2.5KV	
Torque(N-m)	0.20	
Screw	M2	
Wire strip length	6~7mm	
Pole	Cat.No.	
02	ESK381R-02P	
:	:	
:	:	
24	ESK381R-24P	

Approval		
Technical Data	UL	IEC
Rated voltage	300V	450V
Rated current	30A	32A
Conductor cross-section, solid (AWG/mm ²)	30~10	0.5~4.0
Conductor cross-section, flexible (AWG/mm ²)	30~10	0.5~4.0
Rated impulse voltage	6KV	
Torque(N-m)	0.8	
Screw	M3	
Wire strip length	10~11mm	
Pole	Cat.No.	
2X2	EKB635V-04P	
3X2	EKB635V-06P	
:	:	
:	:	

Approval		
Technical Data	UL	IEC
Rated voltage	300V	450V
Rated current	30A	32A
Conductor cross-section, solid (AWG/mm ²)	26~10	0.2~4.0
Conductor cross-section, flexible (AWG/mm ²)	26~10	0.2~4.0
Rated impulse voltage	6KV	
Torque(N-m)	0.79	
Screw	M3	
Wire strip length	10~11mm	
Pole	Cat.No.	
02	ESK635V-02P	
:	:	
:	:	
12	ESK635V-12P	



ESK508V

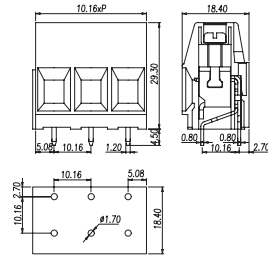


Pitch:5.08mm

Approval			
Technical Data	UL	IEC	
Rated voltage	300V	250V	
Rated current	23A	24A	
Conductor cross-section, solid (AWG/mm ²)	26-12	0.5-2.5	
Conductor cross-section, flexible (AWG/mm ²)	26-12	0.5-2.5	
Rated impulse voltage	4KV		
Torque(N-m)	0.80		
Screw	M3		
Wire strip length	10-11mm		
Pole	Cat.No.		
02	ESK508V-02P		
:	:		
:	:		
12	ESK508V-12P		



ESK116V

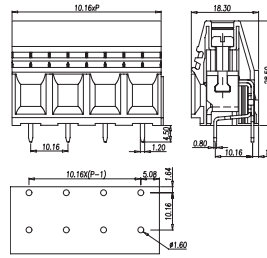


Pitch:10.16mm

Approval			
Technical Data	UL	IEC	
Rated voltage	300V / 600V	1000V	
Rated current	65A / 5A	57A	
Conductor cross-section, solid (AWG/mm ²)	20-6	0.5-10	
Conductor cross-section, flexible (AWG/mm ²)	20-6	0.5-10	
Rated impulse voltage	8KV		
Torque(N-m)	1.76		
Screw	M4		
Wire strip length	11-12mm		
Pole	Cat.No.		
02	ESK116V-02P		
03	ESK116V-03P		
:	:		
:	:		



ESKW116V

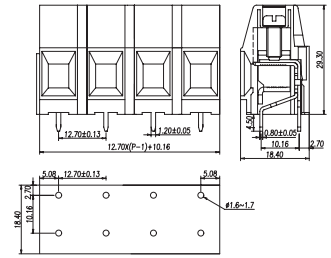


Pitch:10.16mm

Approval			
Technical Data	UL	IEC	
Rated voltage	300V	750V	
Rated current	65A	57A	
Conductor cross-section, solid (AWG/mm ²)	22-6 / 0.5-10		
Conductor cross-section, flexible (AWG/mm ²)	22-6 / 0.5-10		
Rated impulse voltage	6KV		
Torque(N-m)	2.30		
Screw	M4		
Wire strip length	11-12mm		
Pole	Cat.No.		
02	ESKW116V-02P		
03	ESKW116V-03P		
:	:		
:	:		



ESK116V-..P2

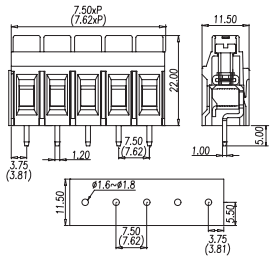


Pitch:12.70mm

Approval			
Technical Data	UL	IEC	
Rated voltage	600V	1000V	
Rated current	65A	57A	
Conductor cross-section, solid (AWG/mm ²)	20-6	0.5-10	
Conductor cross-section, flexible (AWG/mm ²)	20-6	0.5-10	
Rated impulse voltage	8KV		
Torque(N-m)	1.76		
Screw	M4		
Wire strip length	11-12mm		
Pole	Cat.No.		
02	ESK116V-02P2		
03	ESK116V-03P2		
:	:		
:	:		



ESK750V(ESK762V)

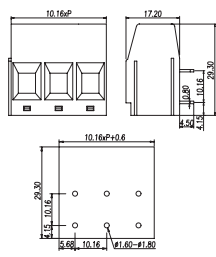


Pitch:7.50mm(7.62mm)

Approval			
Technical Data	UL	IEC	
Rated voltage	300V/600V	750V	
Rated current	30A/5A	32A	
Conductor cross-section, solid (AWG/mm ²)	24-10	0.2-4.0	
Conductor cross-section, flexible (AWG/mm ²)	24-10	0.2-4.0	
Rated impulse voltage	6KV		
Torque(N-m)	1.37		
Screw	M3		
Wire strip length	10-11mm		
Pole	Cat.No.		
02	ESK750V-02P(ESK762V-02P)		
:	:		
:	:		
12	ESK750V-12P(ESK762V-12P)		

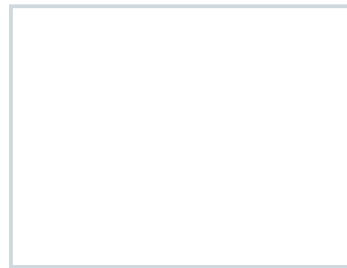


ESK116R-..PAM

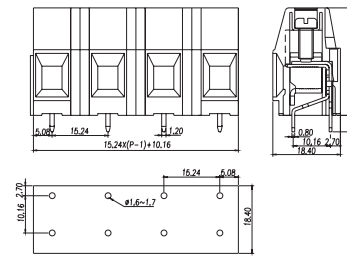


Pitch:10.16mm

Approval			
Technical Data	UL	IEC	
Rated voltage	300V/600V	750V	
Rated current	65A/5A	57A	
Conductor cross-section, solid (AWG/mm ²)	20-6	0.5-10	
Conductor cross-section, flexible (AWG/mm ²)	20-6	0.5-10	
Rated impulse voltage	8KV		
Torque(N-m)	1.76		
Screw	M4		
Wire strip length	11-12mm		
Pole	Cat.No.		
02,03	ESK116R-02P,03P		
04	ESK116R-04PAM		
:	:		
:	:		



ESK116V-..P3

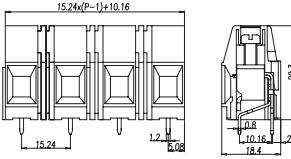


Pitch:15.24mm

Approval			
Technical Data	UL	IEC	
Rated voltage	600V	1000V	
Rated current	65A	57A	
Conductor cross-section, solid (AWG/mm ²)	20-6	0.5-10	
Conductor cross-section, flexible (AWG/mm ²)	20-6	0.5-10	
Rated impulse voltage	8KV		
Torque(N-m)	1.76		
Screw	M4		
Wire strip length	11-12mm		
Pole	Cat.No.		
02	ESK116V-02P3		
03	ESK116V-03P3		
:	:		
:	:		



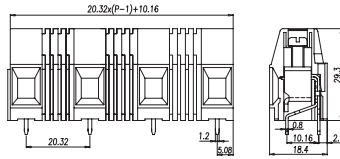
ESK116HV..P3



Pitch:15.24mm



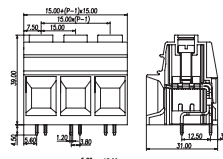
ESK116HV..P5





Pitch:20.32mm

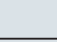
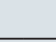




ESK150V



Pitch:15.00mm

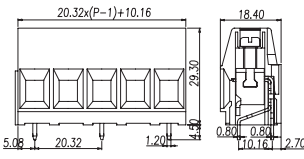
Approval  		
Technical Data	UL	IEC
Rated voltage	1000V	1000V
Rated current	65A	57A
Conductor cross-section, solid (AWG/mm ²)	20-6	0.5-10
Conductor cross-section, flexible (AWG/mm ²)	20-6	0.5-10
Rated impulse voltage	8KV	
Torque(N-m)	1.76	
Screw	M4	
Wire strip length	11~12mm	
Pole	Cat.No.	
02	ESK116HV-02P3	
03	ESK116HV-03P3	
:	:	
:	:	

Approval  		
Technical Data	UL	IEC
Rated voltage	1000V	1000V
Rated current	65A	57A
Conductor cross-section, solid (AWG/mm ²)	20-6	0.5-10
Conductor cross-section, flexible (AWG/mm ²)	20-6	0.5-10
Rated impulse voltage	12KV	
Torque(N-m)	1.76	
Screw	M4	
Wire strip length	11~12mm	
Pole	Cat.No.	
02	ESK116HV-02P5	
03	ESK116HV-03P5	
:	:	
:	:	

Approval  		
Technical Data	UL	IEC
Rated voltage	600V	1000V
Rated current	115A	125A
Conductor cross-section, solid (AWG/mm ²)	20-2	0.5-35
Conductor cross-section, flexible (AWG/mm ²)	20-2	0.5-35
Rated impulse voltage	8KV	
Torque(N-m)	3.8	
Screw	M5	
Wire strip length	18mm	
Pole	Cat.No.	
02	ESK150V-02P	
:	:	
:	:	
09	ESK150V-09P	



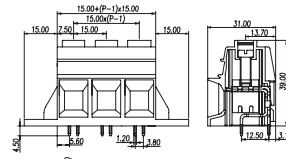
ESK116V..P5





Pitch:20.32mm





ESK150VM



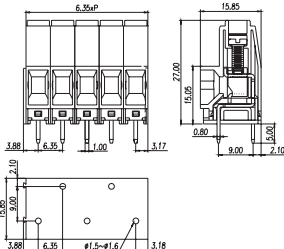
Pitch:15.00mm

Approval  		
Technical Data	UL	IEC
Rated voltage	1000V	1000V
Rated current	65A	57A
Conductor cross-section, solid (AWG/mm ²)	20-6	0.5-10
Conductor cross-section, flexible (AWG/mm ²)	20-6	0.5-10
Rated impulse voltage	12KV	
Torque(N-m)	1.76	
Screw	M4	
Wire strip length	11~12mm	
Pole	Cat.No.	
02	ESK116V-02P5	
:	:	
:	:	
08	ESK116V-08P5	

Approval  		
Technical Data	UL	IEC
Rated voltage	600V	1000V
Rated current	115A	125A
Conductor cross-section, solid (AWG/mm ²)	20-2	0.5-35
Conductor cross-section, flexible (AWG/mm ²)	20-2	0.5-35
Rated impulse voltage	8KV	
Torque(N-m)	3.8	
Screw	M5	
Wire strip length	18mm	
Pole	Cat.No.	
02	ESK150VM-02P	
:	:	
:	:	
07	ESK150VM-07P	



EPK635VN

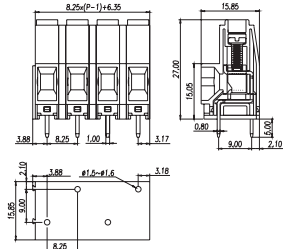


Pitch:6.35mm

Approval		
Technical Data	UL	IEC
Rated voltage	600V	1000V
Rated current	35A	41A
Conductor cross-section, solid (AWG/mm ²)	18-8	0.2-6
Conductor cross-section, flexible (AWG/mm ²)	18-8	0.2-6
Rated impulse voltage	8KV	
Torque(N-m)	0.50	
Screw	M3	
Wire strip length	10mm	
Pole	Cat.No.	
02	EPK635VN-02P	
:	:	
:	:	
16	EPK635VN-16P	



EPK635VN..-P1

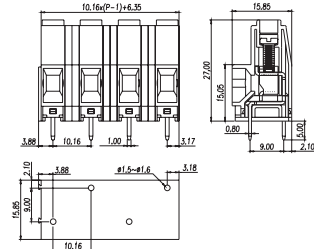


Pitch:8.25mm

Approval	
Technical Data	UL IEC
Rated voltage	600V 1000V
Rated current	35A 41A
Conductor cross-section, solid (AWG/mm ²)	18-8 0.2-6
Conductor cross-section, flexible (AWG/mm ²)	18-8 0.2-6
Rated impulse voltage	8KV
Torque(N-m)	0.50
Screw	M3
Wire strip length	10mm
Pole	Cat.No.
02	EPK635VN-02P1
:	:
:	:
16	EPK635VN-16P1



EPK635VN..-P2

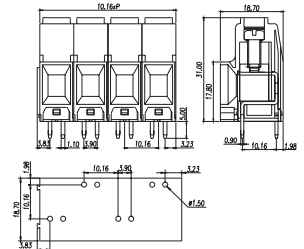


Pitch:10.16mm

Approval	
Technical Data	UL IEC
Rated voltage	600V 1000V
Rated current	35A 41A
Conductor cross-section, solid (AWG/mm ²)	18-8 0.2-6
Conductor cross-section, flexible (AWG/mm ²)	18-8 0.2-6
Rated impulse voltage	8KV
Torque(N-m)	0.50
Screw	M3
Wire strip length	10mm
Pole	Cat.No.
02	EPK635VN-02P2
:	:
:	:
16	EPK635VN-16P2



EPK116VN

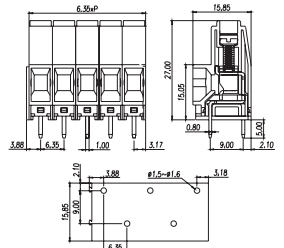


Pitch:10.16mm

Approval		
Technical Data	UL	IEC
Rated voltage	600V	1000V
Rated current	57A / 65A	76A
Conductor cross-section, solid (AWG/mm ²)	20-6	0.5-16
Conductor cross-section, flexible (AWG/mm ²)	20-6	0.5-16
Rated impulse voltage	8KV	
Torque(N-m)	1.2	
Screw	M4	
Wire strip length	12mm	
Pole	Cat.No.	
02	EPK116VN-02P	
:	:	
:	:	
16	EPK116VN-16P	



EPK635VS

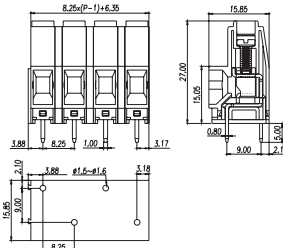


Pitch:6.35mm

Approval		
Technical Data	UL	IEC
Rated voltage	600V	1000V
Rated current	35A	41A
Conductor cross-section, solid (AWG/mm ²)	18-8	0.2-6
Conductor cross-section, flexible (AWG/mm ²)	18-8	0.2-6
Rated impulse voltage	8KV	
Torque(N-m)	0.50	
Screw	M3	
Wire strip length	10mm	
Pole	Cat.No.	
02	EPK635VS-02P	
:	:	
:	:	
16	EPK635VS-16P	



EPK635VS..-P1

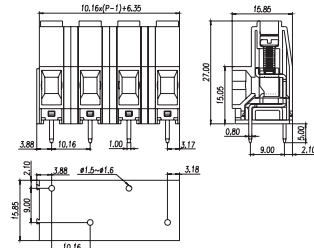


Pitch:8.25mm

Approval	
Technical Data	UL IEC
Rated voltage	600V 1000V
Rated current	35A 41A
Conductor cross-section, solid (AWG/mm ²)	18-8 0.2-6
Conductor cross-section, flexible (AWG/mm ²)	18-8 0.2-6
Rated impulse voltage	8KV
Torque(N-m)	0.50
Screw	M3
Wire strip length	10mm
Pole	Cat.No.
02	EPK635VS-02P1
:	:
:	:
16	EPK635VS-16P1



EPK635VS..-P2

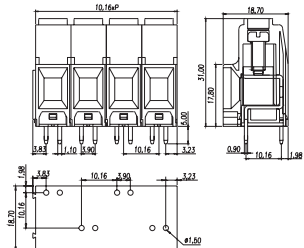


Pitch:10.16mm

Approval	
Technical Data	UL IEC
Rated voltage	600V 1000V
Rated current	35A 41A
Conductor cross-section, solid (AWG/mm ²)	18-8 0.2-6
Conductor cross-section, flexible (AWG/mm ²)	18-8 0.2-6
Rated impulse voltage	8KV
Torque(N-m)	0.50
Screw	M3
Wire strip length	10mm
Pole	Cat.No.
02	EPK635VS-02P2
:	:
:	:
16	EPK635VS-16P2

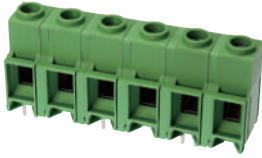


EPK116VS

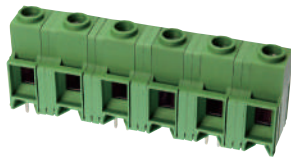


Pitch:10.16mm

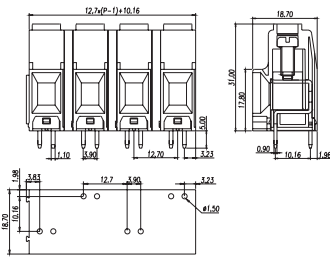
Approval		
Technical Data	UL	IEC
Rated voltage	600V	1000V
Rated current	57A / 65A	76A
Conductor cross-section, solid (AWG/mm ²)	20-6	0.5-16
Conductor cross-section, flexible (AWG/mm ²)	20-6	0.5-16
Rated impulse voltage	8KV	
Torque(N-m)	1.2	
Screw	M4	
Wire strip length	12mm	
Pole	Cat.No.	
02	EPK116VS-02P	
:	:	
:	:	
16	EPK116VS-16P	



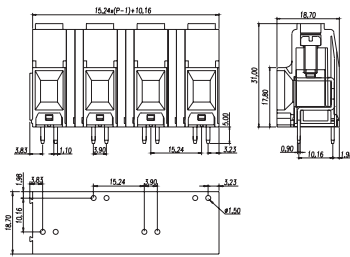
EPK116VN..-P1



EPK116VN..-P2



Pitch:12.7mm



Pitch:15.24mm

Approval		VDE	
Technical Data	UL	IEC	
Rated voltage	600V	1000V	
Rated current	65A	76A	
Conductor cross-section, solid (AWG/mm ²)	20-6	0.5-16	
Conductor cross-section, flexible (AWG/mm ²)	20-6	0.5-16	
Rated impulse voltage		8KV	
Torque(N-m)	1.2		
Screw	M4		
Wire strip length	12mm		
Pole	Cat.No.		
02	EPK116VN-02P1		
:	:		
:	:		
16	EPK116VN-16P1		

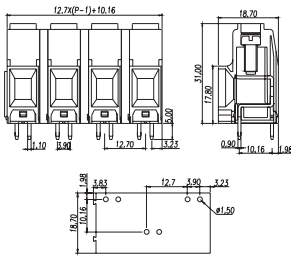
Approval		VDE	
Technical Data	UL	IEC	
Rated voltage	600V	1000V	
Rated current	65A	76A	
Conductor cross-section, solid (AWG/mm ²)	20-6	0.5-16	
Conductor cross-section, flexible (AWG/mm ²)	20-6	0.5-16	
Rated impulse voltage		8KV	
Torque(N-m)	1.2		
Screw	M4		
Wire strip length	12mm		
Pole	Cat.No.		
02	EPK116VN-02P2		
:	:		
:	:		
16	EPK116VN-16P2		



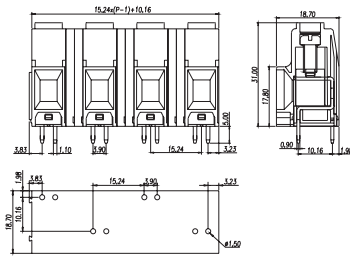
EPK116VS..-P1



EPK116VS..-P2



Pitch:12.7mm



Pitch:15.24mm

Approval		VDE	
Technical Data	UL	IEC	
Rated voltage	600V	1000V	
Rated current	65A	76A	
Conductor cross-section, solid (AWG/mm ²)	20-6	0.5-16	
Conductor cross-section, flexible (AWG/mm ²)	20-6	0.5-16	
Rated impulse voltage		8KV	
Torque(N-m)	1.2		
Screw	M4		
Wire strip length	12mm		
Pole	Cat.No.		
02	EPK116VS-02P1		
:	:		
:	:		
16	EPK116VS-16P1		

Approval		VDE	
Technical Data	UL	IEC	
Rated voltage	600V	1000V	
Rated current	65A	76A	
Conductor cross-section, solid (AWG/mm ²)	20-6	0.5-16	
Conductor cross-section, flexible (AWG/mm ²)	20-6	0.5-16	
Rated impulse voltage		8KV	
Torque(N-m)	1.2		
Screw	M4		
Wire strip length	12mm		
Pole	Cat.No.		
02	EPK116VS-02P2		
:	:		
:	:		
16	EPK116VS-16P2		



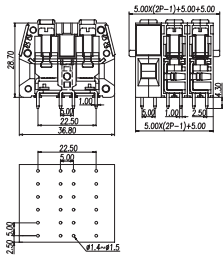
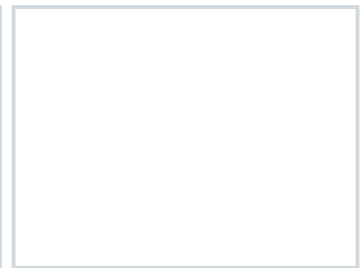
PDS-10



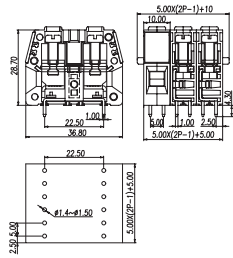
PDS-10S



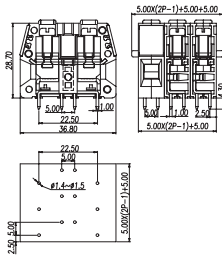
PDS-10H



Pitch:10.00mm



Pitch:10.00mm



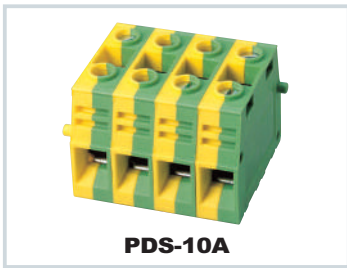
Pitch:10.00mm

Approval		
Technical Data	UL	IEC
Rated voltage	300V	250V
Rated current	65A	57A
Conductor cross-section, solid (AWG/mm ²)	24-6	0.5-10
Conductor cross-section, flexible (AWG/mm ²)	24-6	0.5-10
Rated impulse voltage	4KV	
Torque(N-m)	1.47	
Screw	M4	
Wire strip length	12-13mm	
Pole	Cat.No.	
01	PDS-10-01	
02	PDS-10-02	
03	PDS-10-03	
:	:	

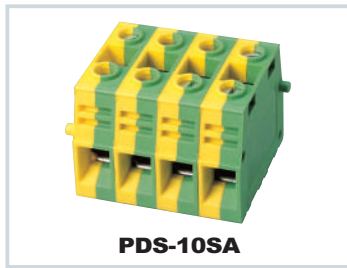
Approval		
Technical Data	UL	IEC
Rated voltage	300V	250V
Rated current	65A	57A
Conductor cross-section, solid (AWG/mm ²)	24-6	0.5-10
Conductor cross-section, flexible (AWG/mm ²)	24-6	0.5-10
Rated impulse voltage	4KV	
Torque(N-m)	1.47	
Screw	M4	
Wire strip length	12-13mm	
Pole	Cat.No.	
01	PDS-10S-01	
02	PDS-10S-02	
03	PDS-10S-03	
:	:	

Approval		
Technical Data	UL	IEC
Rated voltage	300V	250V
Rated current	65A	57A
Conductor cross-section, solid (AWG/mm ²)	24-6	0.5-10
Conductor cross-section, flexible (AWG/mm ²)	24-6	0.5-10
Rated impulse voltage	6KV	
Torque(N-m)	1.47	
Screw	M4	
Wire strip length	12-13mm	
Pole	Cat.No.	
01	PDS-10H-01	
02	PDS-10H-02	
03	PDS-10H-03	
:	:	

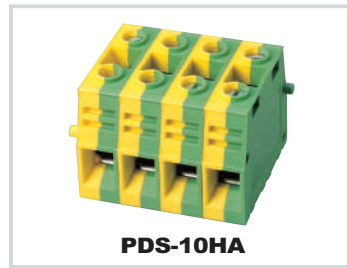
Approval		
Technical Data	UL	IEC
Rated voltage	300V	250V
Rated current	65A	57A
Conductor cross-section, solid (AWG/mm ²)	24-6	0.5-10
Conductor cross-section, flexible (AWG/mm ²)	24-6	0.5-10
Rated impulse voltage	6KV	
Torque(N-m)	1.47	
Screw	M4	
Wire strip length	12-13mm	
Pole	Cat.No.	
01	PDS-10A-01	
02	PDS-10A-02	
03	PDS-10A-03	
:	:	



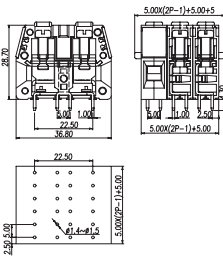
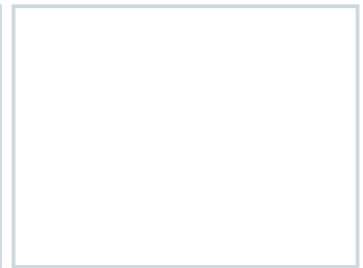
PDS-10A



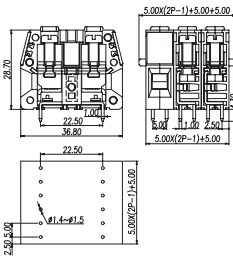
PDS-10SA



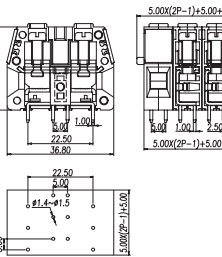
PDS-10HA



Pitch:10.00mm



Pitch:10.00mm



Pitch:10.00mm

Approval		
Technical Data	UL	IEC
Rated voltage	250V	
Rated current	57A	
Conductor cross-section, solid (AWG/mm ²)	24-6	0.5-10
Conductor cross-section, flexible (AWG/mm ²)	24-6	0.5-10
Rated impulse voltage	4KV	
Torque(N-m)	1.47	
Screw	M4	
Wire strip length	12-13mm	
Pole	Cat.No.	
01	PDS-10A-01	
02	PDS-10A-02	
03	PDS-10S-03	
:	:	

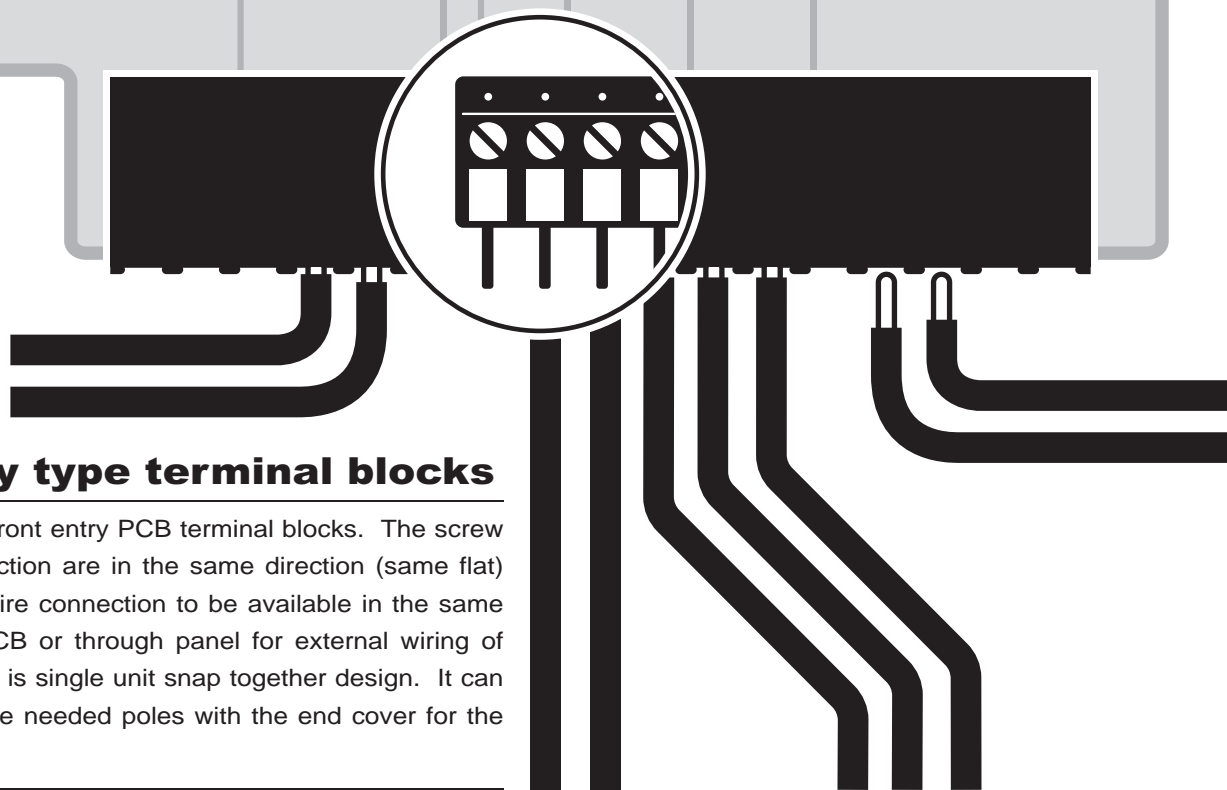
Approval		
Technical Data	UL	IEC
Rated voltage	250V	
Rated current	57A	
Conductor cross-section, solid (AWG/mm ²)	24-6	0.5-10
Conductor cross-section, flexible (AWG/mm ²)	24-6	0.5-10
Rated impulse voltage	4KV	
Torque(N-m)	1.47	
Screw	M4	
Wire strip length	12-13mm	
Pole	Cat.No.	
01	PDS-10SA-01	
02	PDS-10SA-02	
03	PDS-10S-03	
:	:	

Approval		
Technical Data	UL	IEC
Rated voltage	250V	
Rated current	57A	
Conductor cross-section, solid (AWG/mm ²)	24-6	0.5-10
Conductor cross-section, flexible (AWG/mm ²)	24-6	0.5-10
Rated impulse voltage	6KV	
Torque(N-m)	1.47	
Screw	M4	
Wire strip length	12-13mm	
Pole	Cat.No.	
01	PDS-10HA-01	
02	PDS-10HA-02	
03	PDS-10HA-03	
:	:	

Approval		
Technical Data	UL	IEC
Rated voltage	250V	
Rated current	57A	
Conductor cross-section, solid (AWG/mm ²)	24-6	0.5-10
Conductor cross-section, flexible (AWG/mm ²)	24-6	0.5-10
Rated impulse voltage	6KV	
Torque(N-m)	1.47	
Screw	M4	
Wire strip length	12-13mm	
Pole	Cat.No.	
01	PDS-10A-01	
02	PDS-10A-02	
03	PDS-10S-03	
:	:	

PCB

Front entry type
terminal blocks



Front entry type terminal blocks

DT-123 series are front entry PCB terminal blocks. The screw and wire entry direction are in the same direction (same flat) which makes the wire connection to be available in the same flat. Suitable for PCB or through panel for external wiring of equipments. DT-123 is single unit snap together design. It can be assembled to the needed poles with the end cover for the needed application.



DT-123RA



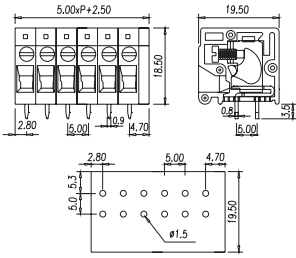
DT-123VA



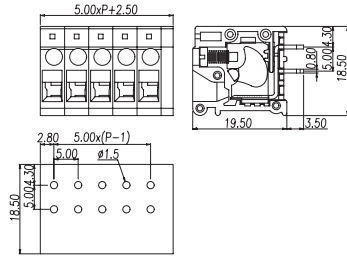
DT-123VB



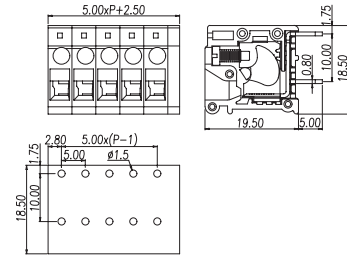
DT-123HVR



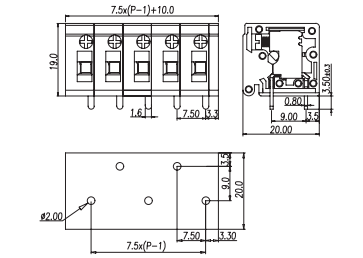
Pitch:5.00mm



Pitch:5.00mm



Pitch:5.00mm



Pitch:7.50mm

Approval			
Technical Data	UL	IEC	
Rated voltage	300V	320V	
Rated current	20A	24A	
Conductor cross-section, solid (AWG/mm ²)	22-12	0.5-2.5	
Conductor cross-section, flexible (AWG/mm ²)	22-12	0.5-2.5	
Rated impulse voltage	4KV		
Torque(N-m)	0.51		
Screw	M2.5		
Wire strip length	13-14mm		
Pole	Cat.No.		
02	DT-123RA-02P		
:	:		
:	:		
24	DT-123RA-24P		

Approval			
Technical Data	UL	IEC	
Rated voltage	300V	450V	
Rated current	20A / 26A	24A	
Conductor cross-section, solid (AWG/mm ²)	22-12	0.5-2.5	
Conductor cross-section, flexible (AWG/mm ²)	22-12	0.5-2.5	
Rated impulse voltage	4KV		
Torque(N-m)	0.5		
Screw	M2.5		
Wire strip length	13-14mm		
Pole	Cat.No.		
02	DT-123VA-02P		
:	:		
:	:		
24	DT-123VA-24P		

Approval			
Technical Data	UL	IEC	
Rated voltage	300V	450V	
Rated current	20A / 26A	24A	
Conductor cross-section, solid (AWG/mm ²)	22-12	0.5-2.5	
Conductor cross-section, flexible (AWG/mm ²)	22-12	0.5-2.5	
Rated impulse voltage	4KV		
Torque(N-m)	0.5		
Screw	M2.5		
Wire strip length	13-14mm		
Pole	Cat.No.		
02	DT-123VB-02P		
:	:		
:	:		
24	DT-123VB-24P		

Approval			
Technical Data	UL	IEC	
Rated voltage	600V	750V	
Rated current	20A	24A	
Conductor cross-section, solid (AWG/mm ²)	22-12	0.5-2.5	
Conductor cross-section, flexible (AWG/mm ²)	22-12	0.5-2.5	
Rated impulse voltage	8KV		
Torque(N-m)	0.49		
Screw	M2.5		
Wire strip length	13-14mm		
Pole	Cat.No.		
02	DT-123HVR-02P		
:	:		
:	:		
24	DT-123HVR-24P		



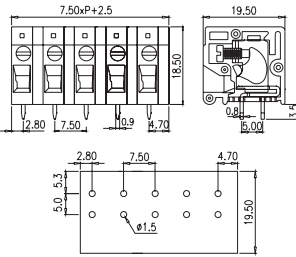
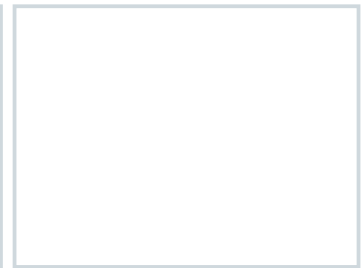
DT-123RA..P3



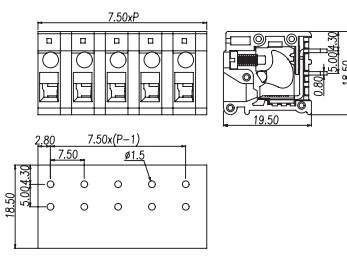
DT-123VA..P3



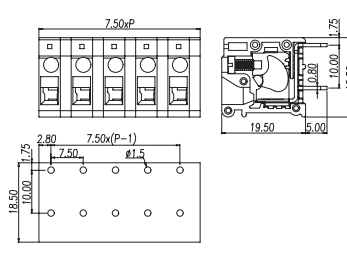
DT-123VB..P3



Pitch:7.50mm



Pitch:7.50mm



Pitch:7.50mm

Approval			
Technical Data	UL	IEC	
Rated voltage	300V	500V	
Rated current	20A	24A	
Conductor cross-section, solid (AWG/mm ²)	22-12	0.5-2.5	
Conductor cross-section, flexible (AWG/mm ²)	22-12	0.5-2.5	
Rated impulse voltage	6KV		
Torque(N-m)	0.5		
Screw	M2.5		
Wire strip length	13-14mm		
Pole	Cat.No.		
02	DT-123RA-02P3		
:	:		
:	:		
24	DT-123RA-24P3		

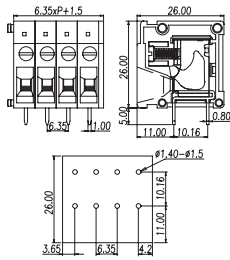
Approval			
Technical Data	UL	IEC	
Rated voltage	300V	750V	
Rated current	20A / 26A	24A	
Conductor cross-section, solid (AWG/mm ²)	22-12	0.5-2.5	
Conductor cross-section, flexible (AWG/mm ²)	22-12	0.5-2.5	
Rated impulse voltage	6KV		
Torque(N-m)	0.5		
Screw	M2.5		
Wire strip length	13-14mm		
Pole	Cat.No.		
02	DT-123VA-02P3		
:	:		
:	:		
24	DT-123VA-24P3		

Approval			
Technical Data	UL	IEC	
Rated voltage	300V	750V	
Rated current	20A / 26A	24A	
Conductor cross-section, solid (AWG/mm ²)	22-12	0.5-2.5	
Conductor cross-section, flexible (AWG/mm ²)	22-12	0.5-2.5	
Rated impulse voltage	6KV		
Torque(N-m)	0.5		
Screw	M2.5		
Wire strip length	13-14mm		
Pole	Cat.No.		
02	DT-123VB-02P3		
:	:		
:	:		
24	DT-123VB-24P3		

Approval			
Technical Data	UL	IEC	
Rated voltage	300V	750V	
Rated current	20A / 26A	24A	
Conductor cross-section, solid (AWG/mm ²)	22-12	0.5-2.5	
Conductor cross-section, flexible (AWG/mm ²)	22-12	0.5-2.5	
Rated impulse voltage	6KV		
Torque(N-m)	0.5		
Screw	M2.5		
Wire strip length	13-14mm		
Pole	Cat.No.		
02	DT-123HVR-02P3		
:	:		
:	:		
24	DT-123HVR-24P3		



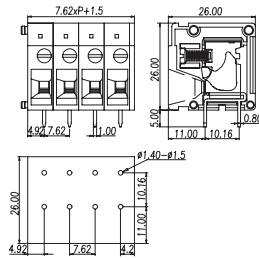
DT-2300



Pitch:6.35mm



DT-2320



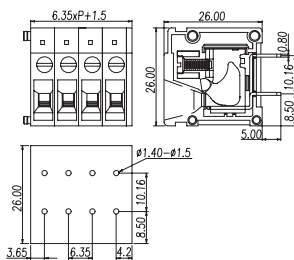
Pitch:7.62mm

Approval		
Technical Data	UL	IEC
Rated voltage	300V	450V
Rated current	30A	24A
Conductor cross-section, solid (AWG/mm ²)	22-10	0.5-2.5
Conductor cross-section, flexible (AWG/mm ²)	22-10	0.5-2.5
Rated impulse voltage	4KV	
Torque(N-m)	0.59	
Screw	M3	
Wire strip length	10-11mm	
Pole	Cat.No.	
02	DT-2300-02P	
:	:	
:	:	
16	DT-2300-16P	

Approval		
Technical Data	UL	IEC
Rated voltage	300V	450V
Rated current	30A	24A
Conductor cross-section, solid (AWG/mm ²)	22-10	0.5-2.5
Conductor cross-section, flexible (AWG/mm ²)	22-10	0.5-2.5
Rated impulse voltage	6KV	
Torque(N-m)	0.59	
Screw	M3	
Wire strip length	10-11mm	
Pole	Cat.No.	
02	DT-2320-02P	
:	:	
:	:	
16	DT-2320-16P	



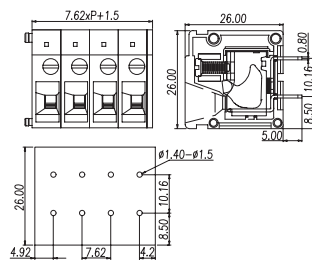
DT-2301



Pitch:6.35mm



DT-2321



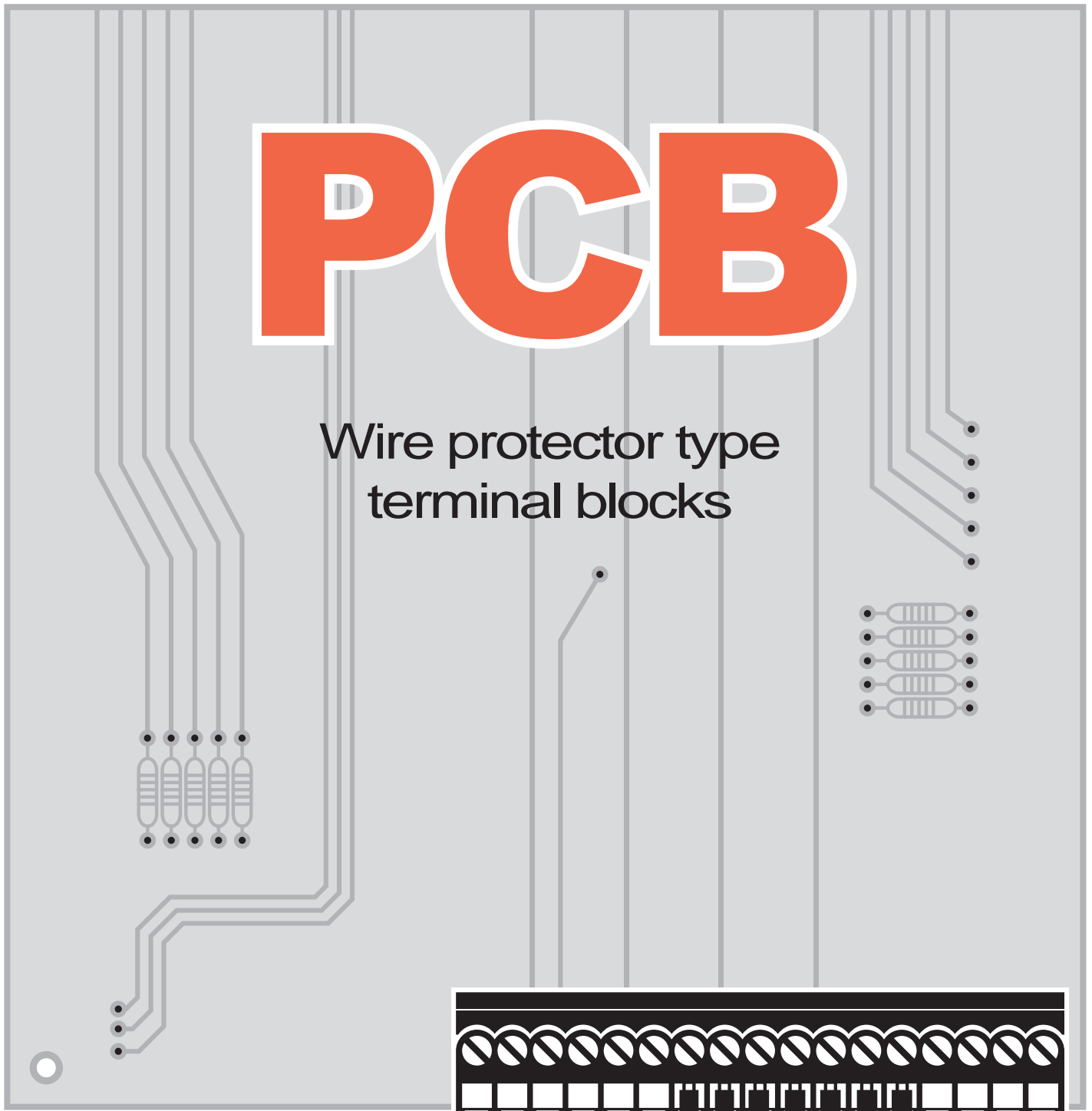
Pitch:7.62mm

Approval		
Technical Data	UL	IEC
Rated voltage	300V	450V
Rated current	30A	24A
Conductor cross-section, solid (AWG/mm ²)	22-10	0.5-2.5
Conductor cross-section, flexible (AWG/mm ²)	22-10	0.5-2.5
Rated impulse voltage	4KV	
Torque(N-m)	0.59	
Screw	M3	
Wire strip length	10-11mm	
Pole	Cat.No.	
02	DT-2301-02P	
:	:	
:	:	
16	DT-2301-16P	

Approval		
Technical Data	UL	IEC
Rated voltage	300V	450V
Rated current	30A	24A
Conductor cross-section, solid (AWG/mm ²)	22-10	0.5-2.5
Conductor cross-section, flexible (AWG/mm ²)	22-10	0.5-2.5
Rated impulse voltage	6KV	
Torque(N-m)	0.59	
Screw	M3	
Wire strip length	10-11mm	
Pole	Cat.No.	
02	DT-2321-02P	
:	:	
:	:	
16	DT-2321-16P	

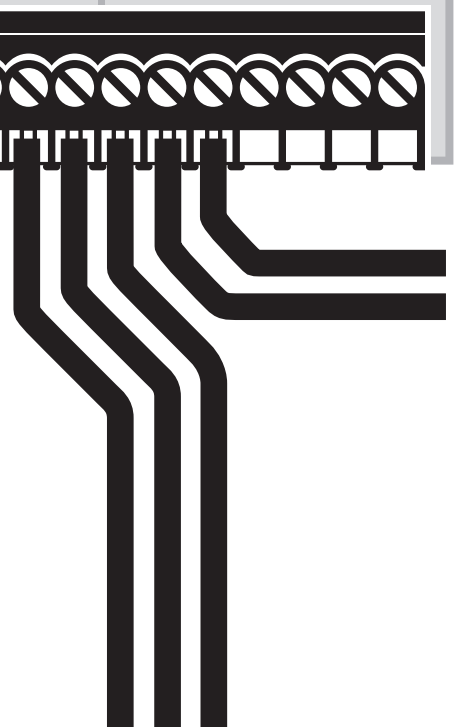
PCB

Wire protector type terminal blocks



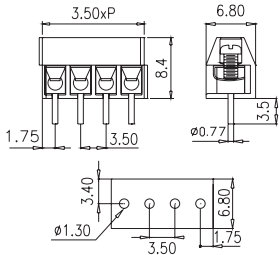
Wire protector type terminal blocks

ED series are simple structure PCB type terminal blocks. Available with round solder pins and square solder pins. Available in 3.50mm, 3.81mm, 5.00mm, 5.08mm, 10.00mm pitches and offers the options with 90degree, 135 degree, 180 degree wire insertion directions. Mostly available for 2P, 3P as basic housing for combining together for any needed poles with dove-tail. The 166 is fixed pole size and can't be connected, but the 166 type provides the largest wire capacity for 4mm². This product provides the most suitable wire connection structure in the most economic way which is extremely suitable for the security system, lighting system, and general electronic industry.





ED350V

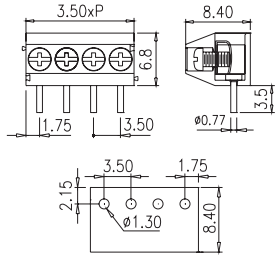


Pitch:3.50mm

Approval		
Technical Data	UL	IEC
Rated voltage	300V	130V
Rated current	10A	10A
Conductor cross-section, solid (AWG/mm ²)	24~18	0.5~1.5
Conductor cross-section, flexible (AWG/mm ²)	24~18	0.5~1.5
Rated impulse voltage	2.5KV	
Torque(N-m)	0.23	
Screw	M2	
Wire strip length	5~6mm	
Pole	Cat.No.	
02	ED350V-02P	
03	ED350V-03P	
:	:	
:	:	



ED350R

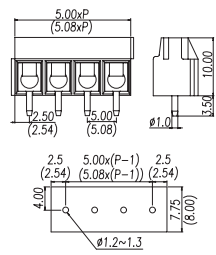


Pitch:3.50mm

Approval		
Technical Data	UL	IEC
Rated voltage	300V	130V
Rated current	10A	10A
Conductor cross-section, solid (AWG/mm ²)	24~16	0.5~1.5
Conductor cross-section, flexible (AWG/mm ²)	24~18	0.5~1.5
Rated impulse voltage	2.5KV	
Torque(N-m)	0.23	
Screw	M2	
Wire strip length	5~6mm	
Pole	Cat.No.	
02	ED350R-02P	
03	ED350R-03P	
:	:	
:	:	



ED500V(ED508V)

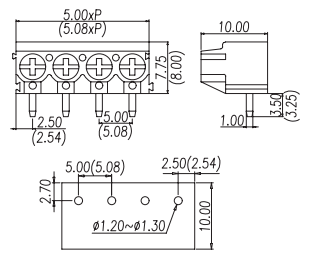


Pitch:5.00mm(5.08mm)

Approval		
Technical Data	UL	IEC
Rated voltage	300V	250V
Rated current	16A	17.5A
Conductor cross-section, solid (AWG/mm ²)	24~14	0.5~1.5
Conductor cross-section, flexible (AWG/mm ²)	24~14	0.5~1.5
Rated impulse voltage	4KV	
Torque(N-m)	0.40	
Screw	M2.5	
Wire strip length	5~6mm	
Pole	Cat.No.	
02	ED500V-02P(ED508V-02P)	
03	ED500V-03P(ED508V-03P)	
:	:	
:	:	

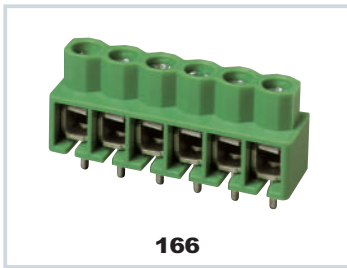


ED500R(ED508R)

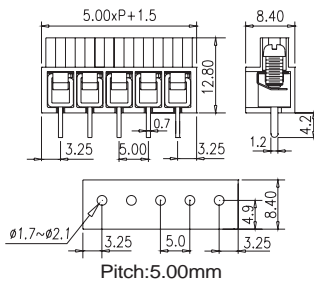


Pitch:5.00mm(5.08mm)

Approval		
Technical Data	UL	IEC
Rated voltage	300V	250V
Rated current	16A	10A
Conductor cross-section, solid (AWG/mm ²)	24~14	0.5~2.5
Conductor cross-section, flexible (AWG/mm ²)	24~14	0.5~2.5
Rated impulse voltage	4KV	
Torque(N-m)	0.40	
Screw	M2.5	
Wire strip length	5~6mm	
Pole	Cat.No.	
02	ED500R-02P(ED508R-02P)	
03	ED500R-03P(ED508R-03P)	
:	:	
:	:	

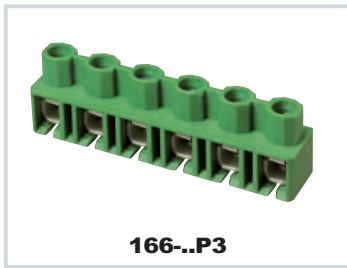


166

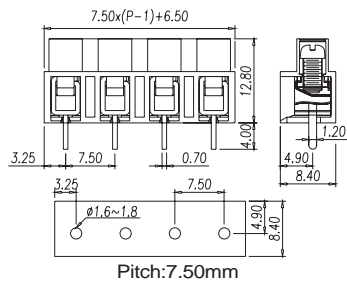


Pitch:5.00mm

Approval		
Technical Data	UL	IEC
Rated voltage	300V	450V
Rated current	12A	24A
Conductor cross-section, solid (AWG/mm ²)	18~12	0.5~2.5
Conductor cross-section, flexible (AWG/mm ²)	18~12	0.5~2.5
Rated impulse voltage	4KV	
Torque(N-m)	0.34	
Screw	M3	
Wire strip length	6~7mm	
Pole	Cat.No.	
02	166-02P	
:	:	
:	:	
30	166-30P	

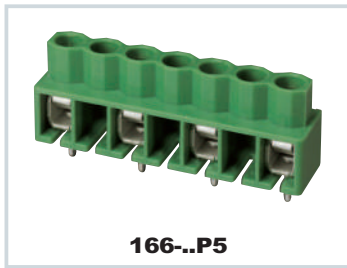


166..P3

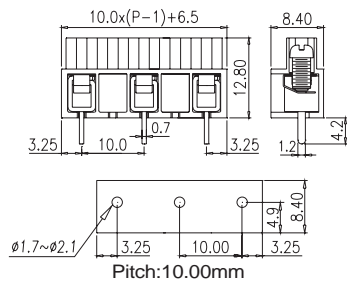


Pitch:7.50mm

Approval		
Technical Data	UL	IEC
Rated voltage	300V	450V
Rated current	12A	24A
Conductor cross-section, solid (AWG/mm ²)	18~12	0.5~2.5
Conductor cross-section, flexible (AWG/mm ²)	18~12	0.5~2.5
Rated impulse voltage	6KV	
Torque(N-m)	0.34	
Screw	M3	
Wire strip length	6~7mm	
Pole	Cat.No.	
02	166-02P3	
:	:	
:	:	
12	166-12P3	



166..P5

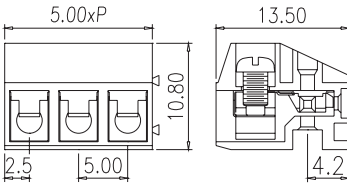


Pitch:10.00mm

Approval		
Technical Data	UL	IEC
Rated voltage	300V / 600V	450V
Rated current	12A	24A
Conductor cross-section, solid (AWG/mm ²)	18~12	0.5~2.5
Conductor cross-section, flexible (AWG/mm ²)	18~12	0.5~2.5
Rated impulse voltage	8KV	
Torque(N-m)	0.34	
Screw	M3	
Wire strip length	6~7mm	
Pole	Cat.No.	
02	166-02P5	
:	:	
:	:	
12	166-12P5	



ED130F

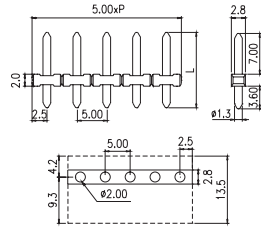


Pitch:5.00mm

Approval	UL IEC	
Technical Data	UL	IEC
Rated voltage	300V	250V
Rated current	7A	10A
Conductor cross-section, solid (AWG/mm ²)	22-14	0.5-1.5
Conductor cross-section, flexible (AWG/mm ²)	22-14	0.5-1.5
Rated impulse voltage	4KV	
Torque(N-m)	0.31	
Screw	M2.5	
Wire strip length	5-6mm	
Pole	Cat.No.	
02	ED130F-02P	
03	ED130F-03P	
:	:	
:	:	
24	ED130F-24P/L	



EDH130F



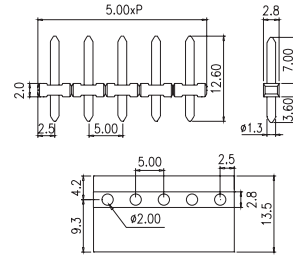
L: 12.6, 14, 14.5, 16.5, 18.6, 19.6, 21.0

Pitch:5.00mm

Approval	UL IEC	
Technical Data	UL	IEC
Rated voltage	300V	250V
Rated current	7A	10A
Conductor cross-section, solid (AWG/mm ²)	22-14	0.5-1.5
Conductor cross-section, flexible (AWG/mm ²)	22-14	0.5-1.5
Rated impulse voltage	4KV	
Torque(N-m)	0.31	
Screw	M2.5	
Wire strip length	5-6mm	
Pole	Cat.No.	
02	EDH130F-02P/L	
:	:	
:	:	
24	EDH130F-24P/L	



EDH130F-..PTHT/12.6

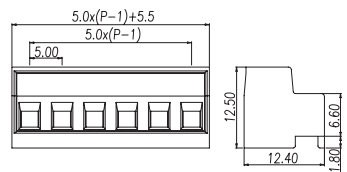


Pitch:5.00mm

Approval	UL IEC	
Technical Data	UL	IEC
Rated voltage	300V	250V
Rated current	7A	10A
Conductor cross-section, solid (AWG/mm ²)	22-14	0.5-1.5
Conductor cross-section, flexible (AWG/mm ²)	22-14	0.5-1.5
Rated impulse voltage	4KV	
Torque(N-m)	0.31	
Screw	M2.5	
Wire strip length	5-6mm	
Pole	Cat.No.	
02	EDH130F-02PTHT/12.6	
:	:	
:	:	
20	EDH130F-20PTHT/12.6	



ED130A

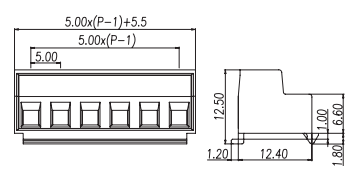


Pitch:5.00mm

Approval	UL IEC	
Technical Data	UL	IEC
Rated voltage	300V	250V
Rated current	12A	12A
Conductor cross-section, solid (AWG/mm ²)	22-14	0.5-1.5
Conductor cross-section, flexible (AWG/mm ²)	22-14	0.5-1.5
Rated impulse voltage	4KV	
Torque(N-m)	0.31	
Screw	M2.5	
Wire strip length	5-6mm	
Pole	Cat.No.	
02	ED130A-02P	
:	:	
:	:	
20	ED130A-20P	



ED130T

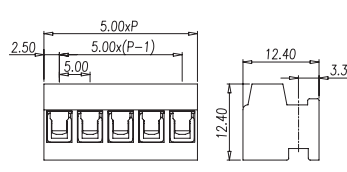


Pitch:5.00mm

Approval	UL IEC	
Technical Data	UL	IEC
Rated voltage	300V	250V
Rated current	12A	12A
Conductor cross-section, solid (AWG/mm ²)	22-14	0.5-1.5
Conductor cross-section, flexible (AWG/mm ²)	22-14	0.5-1.5
Rated impulse voltage	4KV	
Torque(N-m)	0.31	
Screw	M2.5	
Wire strip length	5-6mm	
Pole	Cat.No.	
02	ED130T-02P	
:	:	
:	:	
20	ED130T-20P	



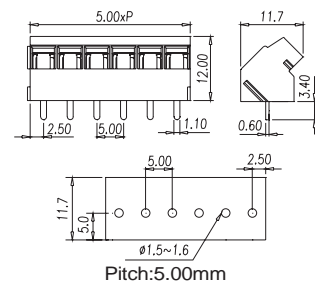
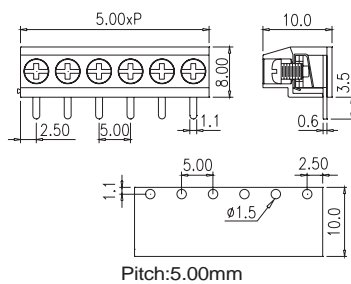
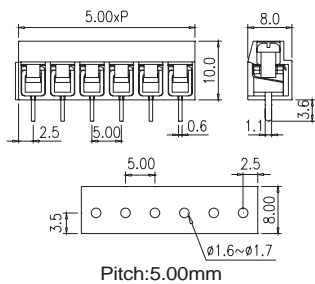
ED130W



Pitch:5.00mm

Approval	UL IEC	
Technical Data	UL	IEC
Rated voltage	300V	250V
Rated current	12A	12A
Conductor cross-section, solid (AWG/mm ²)	22-14	0.5-1.5
Conductor cross-section, flexible (AWG/mm ²)	22-14	0.5-1.5
Rated impulse voltage	4KV	
Torque(N-m)	0.31	
Screw	M2.5	
Wire strip length	5-6mm	
Pole	Cat.No.	
02	ED130W-02P	
:	:	
:	:	
20	ED130W-20P	

	EDH130-01~19(Ø1.0)	EDH130-20~39(Ø1.1) EDH130-60~79	EDH130F(Ø1.3) EDH130-40~59	EDH130(A)(Ø1.3)
ED130A ED130T	●	●	●	
ED130W ED130R	●	●	●	
ED130V				●
ED130F			●	●



Approval			Approval			Approval		
Technical Data			Technical Data			Technical Data		
Rated voltage	300V	250V	Rated voltage	300V	250V	Rated voltage	300V	250V
Rated current	8A	17.5A	Rated current	8A	10A	Rated current	8A	10A
Conductor cross-section, solid (AWG/mm ²)	26~14	0.5~1.5	Conductor cross-section, solid (AWG/mm ²)	26~14	0.5~1.5	Conductor cross-section, solid (AWG/mm ²)	26~14	0.5~1.5
Conductor cross-section, flexible (AWG/mm ²)	26~14	0.5~1.5	Conductor cross-section, flexible (AWG/mm ²)	26~14	0.5~1.5	Conductor cross-section, flexible (AWG/mm ²)	26~14	0.5~1.5
Rated impulse voltage	4KV		Rated impulse voltage	4KV		Rated impulse voltage	4KV	
Torque(N-m)	0.50		Torque(N-m)	0.50		Torque(N-m)	0.50	
Screw	M2.5		Screw	M2.5		Screw	M2.5	
Wire strip length	6~7mm		Wire strip length	6~7mm		Wire strip length	6~7mm	
Pole	Cat.No.		Pole	Cat.No.		Pole	Cat.No.	
02	DT-126VP-02P		02	DT-126RP-02P		02	DT-126AP-02P	
03	DT-126VP-03P		03	DT-126RP-03P		03	DT-126AP-03P	
:	:		:	:		:	:	
:	:		:	:		:	:	